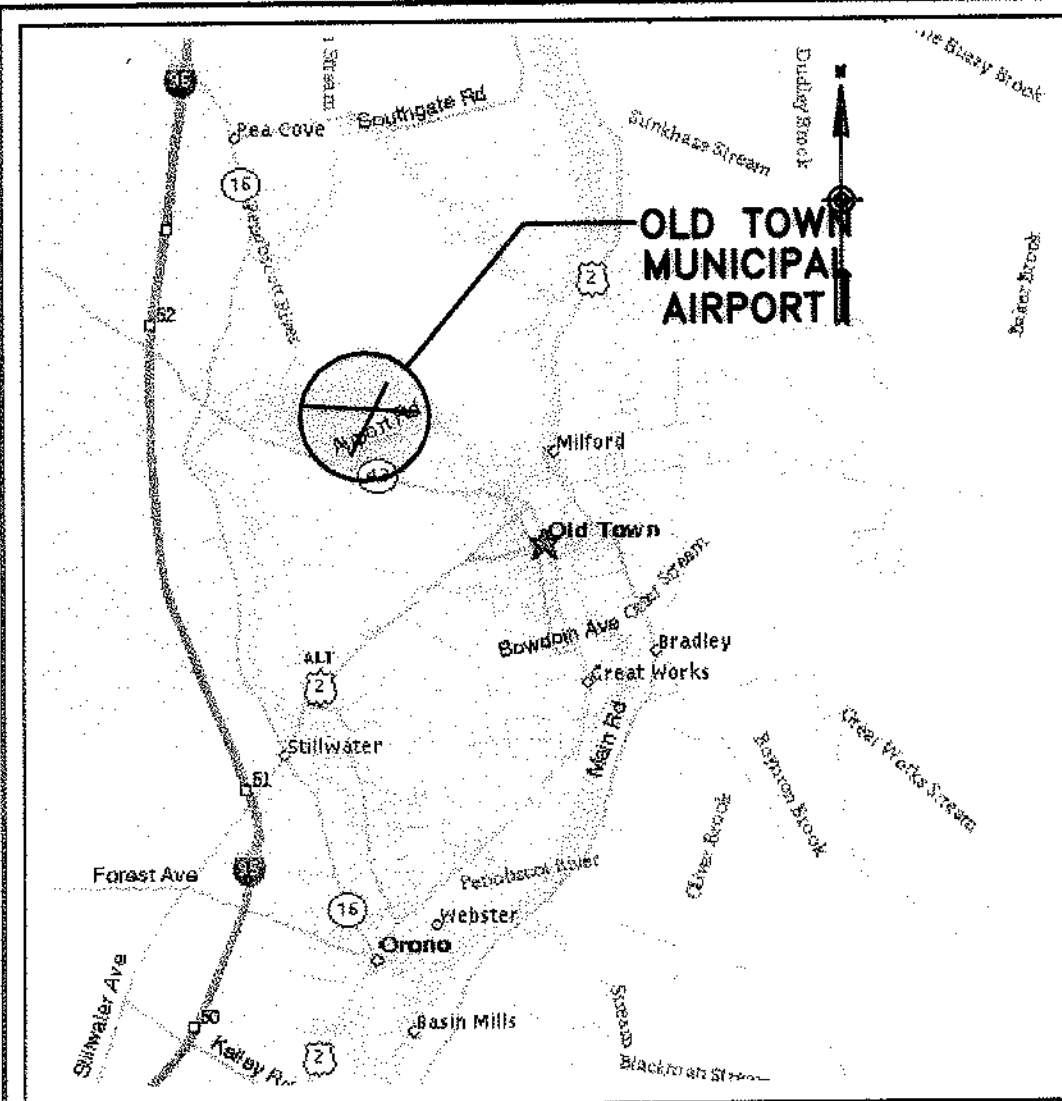
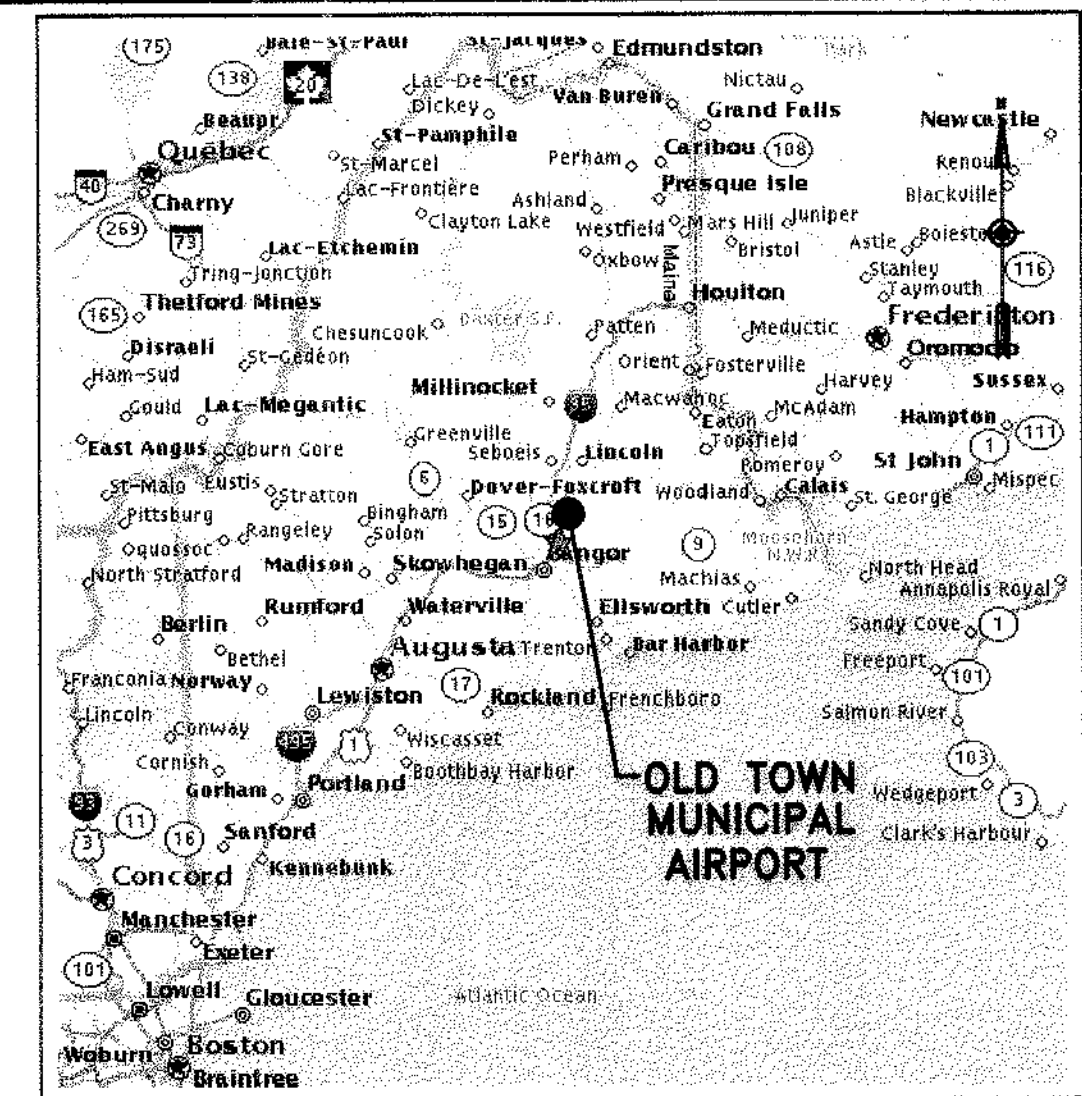


# OLD TOWN MUNICIPAL AIRPORT OLD TOWN, MAINE

# MASTER PLAN UPDATE



**VICINITY MAP**  
NOT TO SCALE



**LOCATION MAP**  
NOT TO SCALE

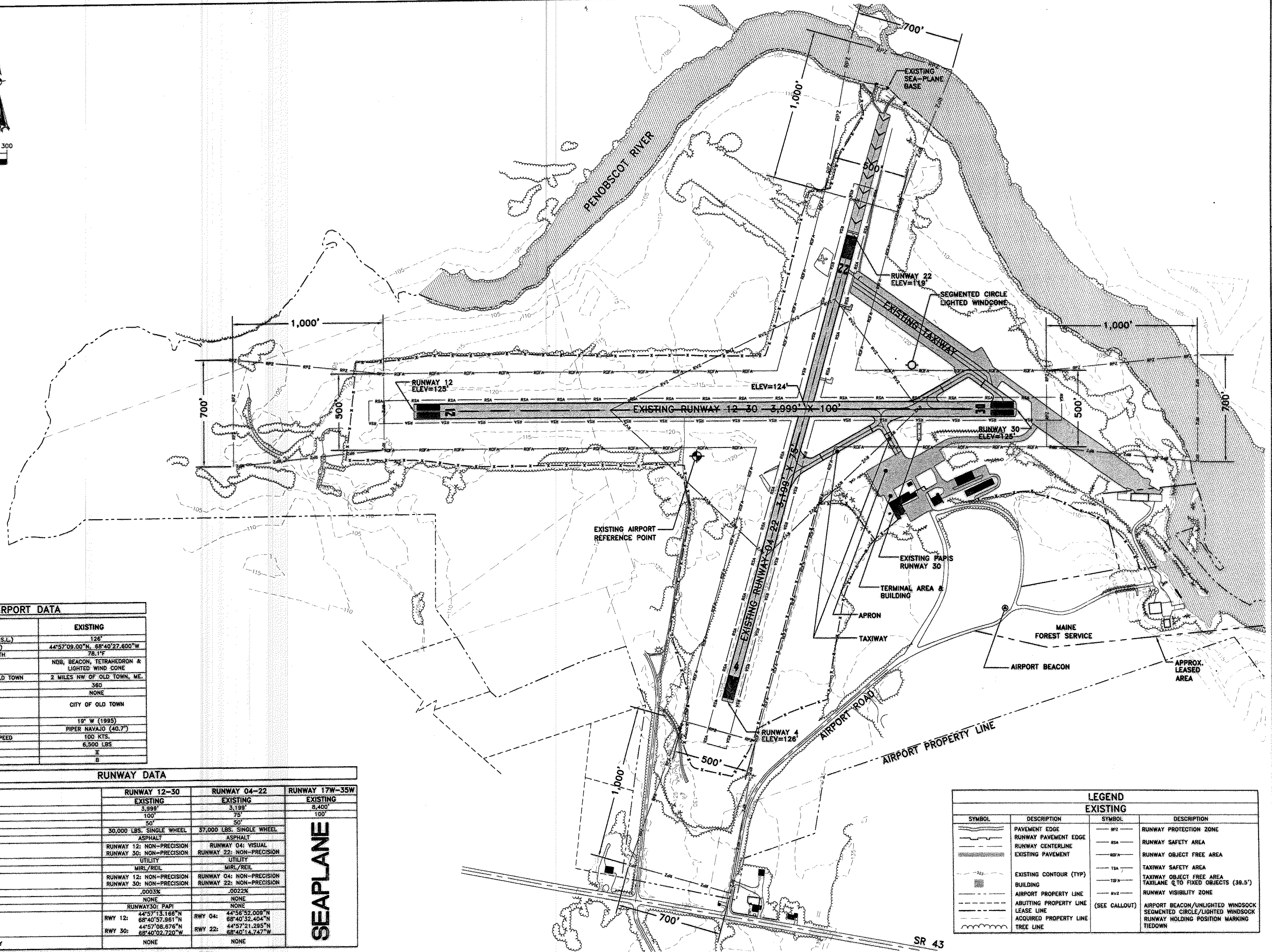
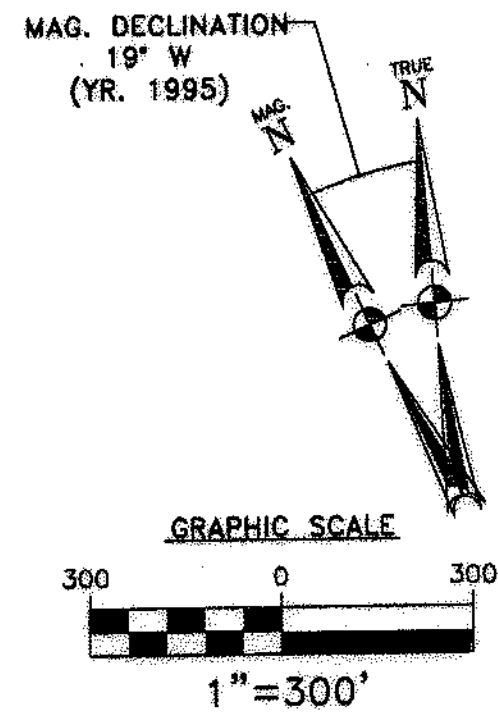
## MAINE DEPARTMENT OF TRANSPORTATION STATE PROJECT NO. SAIP11.9047(1) OLD TOWN PROJECT NO. 008792.03

### INDEX TO DRAWINGS

1. COVER/TITLE SHEET
2. ALP (EXISTING FACILITIES)
3. ALP (ULTIMATE FACILITIES)
4. ALP DATA SHEET
5. TERMINAL AREA PLAN
6. RUNWAY 4-22 & 12-30 PLAN AND PROFILE
7. FAR PART 77 AIRSPACE SURFACES
8. LAND USE PLAN
9. AIRPORT PROPERTY MAP-EXHIBIT 'A'

**DECEMBER, 2002**

STATE PROJECT NO. SAIP11.9047(1)		OLD TOWN PROJECT NO. 008792.03	
PROJECT DESIGNER <b>Hoyle, Tanner &amp; Associates, Inc.</b> 150 DOW STREET - MANCHESTER, NH 03101 - 1227 Tel: (603) 869-5555 Fax: (603) 869-4168 WEB PAGE: www.hta-nh.com	HTA Consulting Engineers	DR. BY TDB	CHKD. BY JRL
DES. BY TLW	DATE: DECEMBER, 2002	SCALE: AS SHOWN	
OLD TOWN MUNICIPAL AIRPORT AIRPORT MASTER PLAN	COVER/TITLE SHEET		
HTA PROJ. No.: 302901.03	otcover.dwg		
DRAWING NO. <b>1</b>			
SHEET 1 OF 9	REV		



AIRPORT DATA	
ITEM	EXISTING
AIRPORT ELEVATION (U.S.G.S.-M.S.L.)	126'
AIRPORT REFERENCE POINT (ARP)	44°57'09.00"N, 68°40'27.600"W
MEAN MAX. TEMP HOTTEST MONTH	78.1°F
NAVAIDS	NDB, BEACON, TETRAHEDRON & LIGHTED WIND CONE
DISTANCE FROM THE CITY OF OLD TOWN	2 MILES NW OF OLD TOWN, ME.
LAND OWNED (ACRES)	360
AVIGATION EASEMENT (ACRES)	NONE
OWNER	CITY OF OLD TOWN
MAG. DECLINATION	19° W (1995)
CRITICAL AIRCRAFT (WING SPAN)	PIPER NAVAJO (40.7')
CRITICAL AIRCRAFT APPROACH SPEED	100 KTS.
CRITICAL AIRCRAFT MTOW	6,500 LBS
AIRPLANE DESIGN GROUP	I
AIRCRAFT APPROACH CATEGORY	B

RUNWAY DATA			
ITEM	RUNWAY 12-30	RUNWAY 04-22	RUNWAY 17W-35W
	EXISTING	EXISTING	EXISTING
LENGTH	3,999'	3,199'	8,400'
WIDTH	100'	75'	100'
STUB TAXIWAY WIDTHS	50'	50'	
PVMT. STRENGTH	30,000 LBS. SINGLE WHEEL	37,000 LBS. SINGLE WHEEL	
SURFACE MATERIAL	ASPHALT	ASPHALT	
APPROACH TYPE	RUNWAY 12: NON-PRECISION RUNWAY 30: NON-PRECISION	RUNWAY 04: VISUAL RUNWAY 22: NON-PRECISION	
CLASSIFICATION	UTILITY	UTILITY	
RUNWAY LIGHTING	MIRL/REIL	MIRL/REIL	
RUNWAY MARKING	RUNWAY 12: NON-PRECISION RUNWAY 30: NON-PRECISION	RUNWAY 04: NON-PRECISION RUNWAY 22: NON-PRECISION	
EFFECTIVE GRADIENT (%)	.0003%	.0022%	
TAXIWAY LIGHTING	NONE	NONE	
APPROACH AIDS	RUNWAY 30: PAPI	NONE	
RUNWAY END COORDINATES	RWY 12: 44°57'13.166"N 68°40'37.961"W RWY 30: 44°57'08.676"N 68°40'02.720"W	RWY 04: 44°58'52.008"N 68°40'32.404"N RWY 22: 44°57'21.295"N 68°40'14.747"W	
DESIGNATED INSTRUMENT RUNWAY	NONE	NONE	

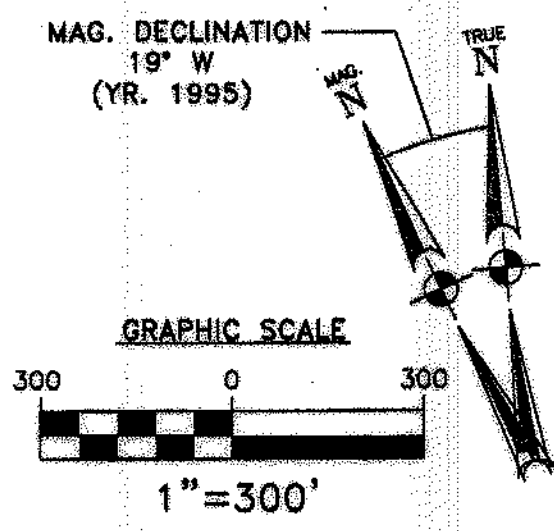
**SEAPLANE**

LEGEND			
EXISTING		EXISTING	
SYMBOL	DESCRIPTION	SYMBOL	DESCRIPTION
	PAVEMENT EDGE		RUNWAY PROTECTION ZONE
	RUNWAY PAVEMENT EDGE		RUNWAY SAFETY AREA
	RUNWAY CENTERLINE		RUNWAY OBJECT FREE AREA
	EXISTING PAVEMENT		TAXIWAY SAFETY AREA
	EXISTING CONTOUR (TYP)		TAXIWAY OBJECT FREE AREA
	BUILDING		TAXIWAY Q TO FIXED OBJECTS (39.5')
	AIRPORT PROPERTY LINE		RUNWAY VISIBILITY ZONE
	ABUTTING PROPERTY LINE		AIRPORT BEACON/UNLIGHTED WINDSOCK
	LEASE LINE		SEGMENTED CIRCLE/LIGHTED WINDSOCK
	ACQUIRED PROPERTY LINE		RUNWAY HOLDING POSITION MARKING
	TREE LINE		TIEDOWN

NOTE: SEE SHEET 4 (ALP DATA SHEET) OF MASTER PLAN SET FOR WIND DATA AND AIRPORT DESIGN CRITERIA.

STATE PROJECT NO.	SAP11.9047(1)
DATE	
REV. NO.	
REVISIONS	
BY	
DESCRIPTION	
PROJECT DESIGNER	<b>HFA</b> Hoyle, Tanner & Associates, Inc. Consulting Engineers
OLD TOWN PROJECT NO.	008792.03
CHKD. BY	JRL
DR. BY	TDB
DES. BY	TLM
DATE	DECEMBER, 2002
SCALE	AS SHOWN
PROJECT NO.	302901.03
PROJECT NAME	OLD TOWN MUNICIPAL AIRPORT AIRPORT MASTER PLAN
PROJECT TITLE	<b>AIRPORT LAYOUT PLAN (EXISTING FACILITIES)</b>
PROJECT ADDRESS	150 DOW STREET - MANCHESTER, NH 03101 - 1227 Tel: (603) 669-5555 Fax: (603) 669-4188 WEB PAGE: www.hoyle-tanner.com
DRAWING NO.	<b>2</b>
SHEET	2 OF 9

- ### AIRPORT DEVELOPMENT
- EXCESS PAVEMENT TO BE REMOVED.
  - IMPROVE RSA: RUNWAYS 4 AND 12, RUNWAY SAFETY AREAS TO BE REGRADED TO MEET REQUIREMENTS.
  - IMPROVE ROFA: RUNWAY 30, CLEAR TREE & SHRUBS TO MEET REQUIREMENTS.
  - REMOVE OBJECTS PENETRATING THE IMAGINARY SURFACES, THE RVZ, RSA, OFA, OFZ, TSA, TOFA & APPROACH SURFACES.
  - CONSTRUCT PARALLEL TAXIWAY W/ACCESS TAXIWAY FOR RUNWAY 4-22. ADD ALL APPROPRIATE MARKINGS AND SIGNAGE.
  - CONSTRUCT PARALLEL TAXIWAY FOR RUNWAY 12-30 IN PHASES.
  - PHASE I: CONSTRUCT HOLDING AREAS RUNWAY 12 & 30 ENDS.
  - PHASE II: PARTIAL PARALLEL TAXIWAY AND STUB TAXIWAY FROM RUNWAY 30 TO THE MID POINT OF RUNWAY 12-30.
  - PHASE II: REMOVE DIAGONAL TAXIWAY CROSSING RUNWAY 12-30.
  - PHASE III: PARTIAL PARALLEL TAXIWAY FROM RUNWAY 12 TO THE MID POINT OF RUNWAY 12-30.
  - TREE & SHRUB CLEARING REQUIRED FOR NEW ACCESS ROAD.
  - NEW HOLDING AREA FOR RUNWAY 4.
  - PAPIS ON RUNWAYS 4, 12 AND 22.
  - THREE TEN UNIT T-HANGARS AND 3 INDIVIDUAL 50'X50' HANGARS. (AS DEMAND REQUIRES).
  - NEW ACCESS ROAD TO ULTIMATE SEA-PLANE BASE
  - RELOCATE EXISTING SEAPLANE BASE TO ULTIMATE LOCATION.
  - ULTIMATE PAVED SEAPLANE BASE RAMP.
  - SEAPLANE BASE PROCEDURES SIGNAGE.
  - PAINT HOLDING POSITION MARKINGS AND INSTALL SIGNS.
  - IMPROVE EXISTING APRON TO MATCH WITH NEW TAXIWAY LOCATION & RUNUP/HOLDING AREA.
  - INSTALL NEW SECURITY FENCING.
  - WIDEN TAXIWAY CONNECTION TO RUNWAY 22 END.
  - AREA SURPLUS FOR AVIATION USE. (COMMERCIAL/INDUSTRIAL DEVELOPMENT)



### LEGEND

SYMBOL	DESCRIPTION	SYMBOL	DESCRIPTION
[Line with dashes]	RUNWAY PROTECTION ZONE	[Dashed line]	SECURITY FENCE
[Line with dots]	RUNWAY SAFETY AREA	[Dashed line]	EXISTING ROAD EDGE
[Line with triangles]	RUNWAY OBJECT FREE AREA	[Dashed line]	RUNWAY PAYEMENT EDGE
[Line with squares]	TAXIWAY SAFETY AREA	[Dashed line]	RUNWAY CENTERLINE
[Line with circles]	TAXIWAY OBJECT FREE AREA (39.5')	[Dashed line]	EXISTING CONTOUR (TP)
[Line with crosses]	RUNWAY VISIBILITY ZONE	[Dashed line]	EXISTING STRUCTURE
[Symbol]	AIRPORT BEACON/UNLIGHTED WINDSOCK	[Symbol]	PROPOSED STRUCTURE
[Symbol]	SEGMENTED CIRCLE/LIGHTED WINDSOCK	[Symbol]	AIRPORT PROPERTY LINE
[Hatched area]	EXISTING PAVEMENT	[Dashed line]	LEASE LINE
[Hatched area]	PROPOSED IMPROVEMENTS	[Dashed line]	ABUTTING PROPERTY LINE
[Hatched area]	OBSTRUCTION TO BE REMOVED	[Dashed line]	ACQUIRED PROPERTY LINE
[Hatched area]	AREA SURPLUS FOR AVIATION USE.	[Dashed line]	EXISTING TREE LINE
[Hatched area]	EXISTING PAVEMENT TO BE REMOVED		

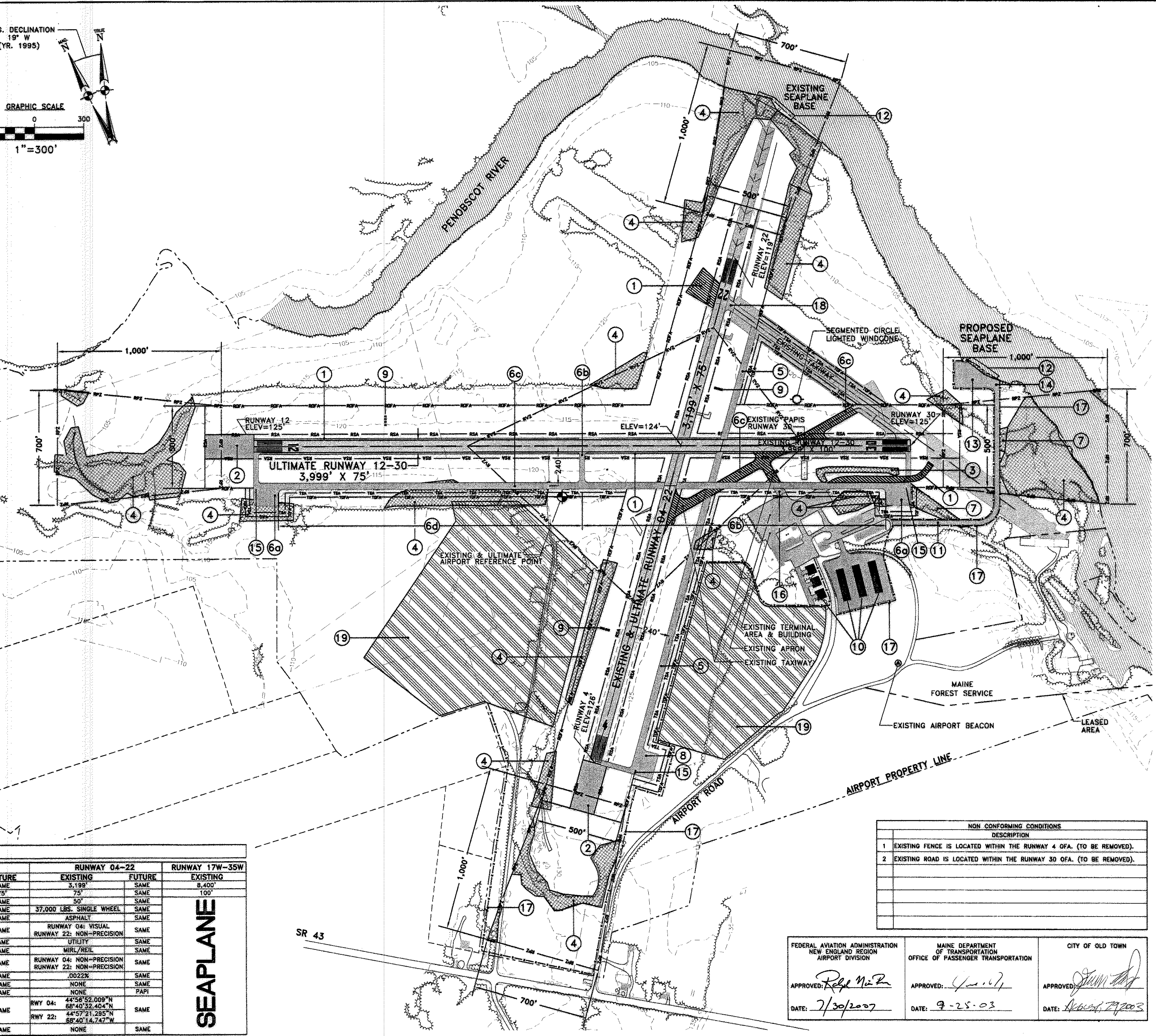
### AIRPORT DATA

ITEM	EXISTING	FUTURE
AIRPORT ELEVATION (U.S.C.S.-M.S.L.)	128'	SAME
AIRPORT REFERENCE POINT (ARP)	44°57'09.00"N, 68°40'27.600"W	SAME
MEAN MAX. TEMP. HOTTEST MONTH	78.1°F	SAME
NAVAIDS	NDB, BEACON, TETRAHEDRON & LIGHTED WIND CONE	SAME
DISTANCE FROM THE CITY OF OLD TOWN	2 MILES NW OF OLD TOWN ME.	SAME
LAND OWNED (ACRES)	360	SAME
AVIGATION EASEMENT (ACRES)	NONE	SAME
OWNER	CITY OF OLD TOWN	SAME
MAG. DECLINATION	19° W (1995)	SAME
CRITICAL AIRCRAFT (WING SPAN)	PIPER NAVAJO (40.7')	SAME
CRITICAL AIRCRAFT APPROACH SPEED	100 KTS.	SAME
CRITICAL AIRCRAFT WTOW	6,500 LBS	SAME
AIRPLANE DESIGN GROUP	I	I
AIRCRAFT APPROACH CATEGORY	B	B

### RUNWAY DATA

ITEM	RUNWAY 12-30		RUNWAY 04-22		RUNWAY 17W-35W
	EXISTING	FUTURE	EXISTING	FUTURE	
LENGTH	3,999'	SAME	3,193'	SAME	8,400'
WIDTH	75'	SAME	75'	SAME	100'
TAXIWAY WIDTHS	50'	SAME	50'	SAME	
PAVMT. STRENGTH	30,000 LBS. SINGLE WHEEL	SAME	37,000 LBS. SINGLE WHEEL	SAME	
PAVEMENT TYPE	ASPHALT	SAME	ASPHALT	SAME	
APPROACH TYPE	RUNWAY 12: NON-PRECISION	SAME	RUNWAY 04: VISUAL	SAME	
CLASSIFICATION	RUNWAY 30: NON-PRECISION	SAME	RUNWAY 22: NON-PRECISION	SAME	
UTILITY	MIRL/REIL	SAME	MIRL/REIL	SAME	
RUNWAY LIGHTING	RUNWAY 12: NON-PRECISION	SAME	RUNWAY 04: NON-PRECISION	SAME	
RUNWAY MARKING	RUNWAY 30: NON-PRECISION	SAME	RUNWAY 22: NON-PRECISION	SAME	
EFFECTIVE GRADIENT (%)	.0003%	SAME	.0022%	SAME	
TAXIWAY LIGHTING	NONE	SAME	NONE	SAME	
VISUAL AIDS	RUNWAY 30: PAPI	SAME	NONE	PAPI	
RUNWAY END COORDINATES	RWY 12: 44°57'13.166"N 68°40'57.951"W	SAME	RWY 04: 44°56'52.009"N 68°40'33.404"W	SAME	
	RWY 30: 44°57'08.876"N 68°40'02.720"W		RWY 22: 44°57'21.285"N 68°40'14.747"W		
DESIGNATED INSTRUMENT RUNWAY	NONE	SAME	NONE	SAME	

**SEAPLANE**



### NON CONFORMING CONDITIONS

DESCRIPTION
1 EXISTING FENCE IS LOCATED WITHIN THE RUNWAY 4 OFA. (TO BE REMOVED).
2 EXISTING ROAD IS LOCATED WITHIN THE RUNWAY 30 OFA. (TO BE REMOVED).

FEDERAL AVIATION ADMINISTRATION NEW ENGLAND REGION AIRPORT DIVISION	MAINE DEPARTMENT OF TRANSPORTATION OFFICE OF PASSENGER TRANSPORTATION	CITY OF OLD TOWN
APPROVED: <i>[Signature]</i>	APPROVED: <i>[Signature]</i>	APPROVED: <i>[Signature]</i>
DATE: 7/30/2007	DATE: 9-25-03	DATE: 10/27/2003

REVISIONS

REV. NO.	DATE	DESCRIPTION
1		

STATE PROJECT NO. SAIP11.9047(1)

OLD TOWN PROJECT NO. 008792.03

PROJECT DESIGNER: **HTA** Consulting Engineers

PROJECT NO. 302901.03

150 DOW STREET - MANCHESTER, NH 03101 - 1227

Tel: (603) 888-9555 Fax: (603) 888-4188 WEB PAGE: www.hta-nh.com

SCALE: AS SHOWN DATE: DECEMBER, 2002

DES. BY: TLM DR. BY: TBB CHKD. BY: JRL

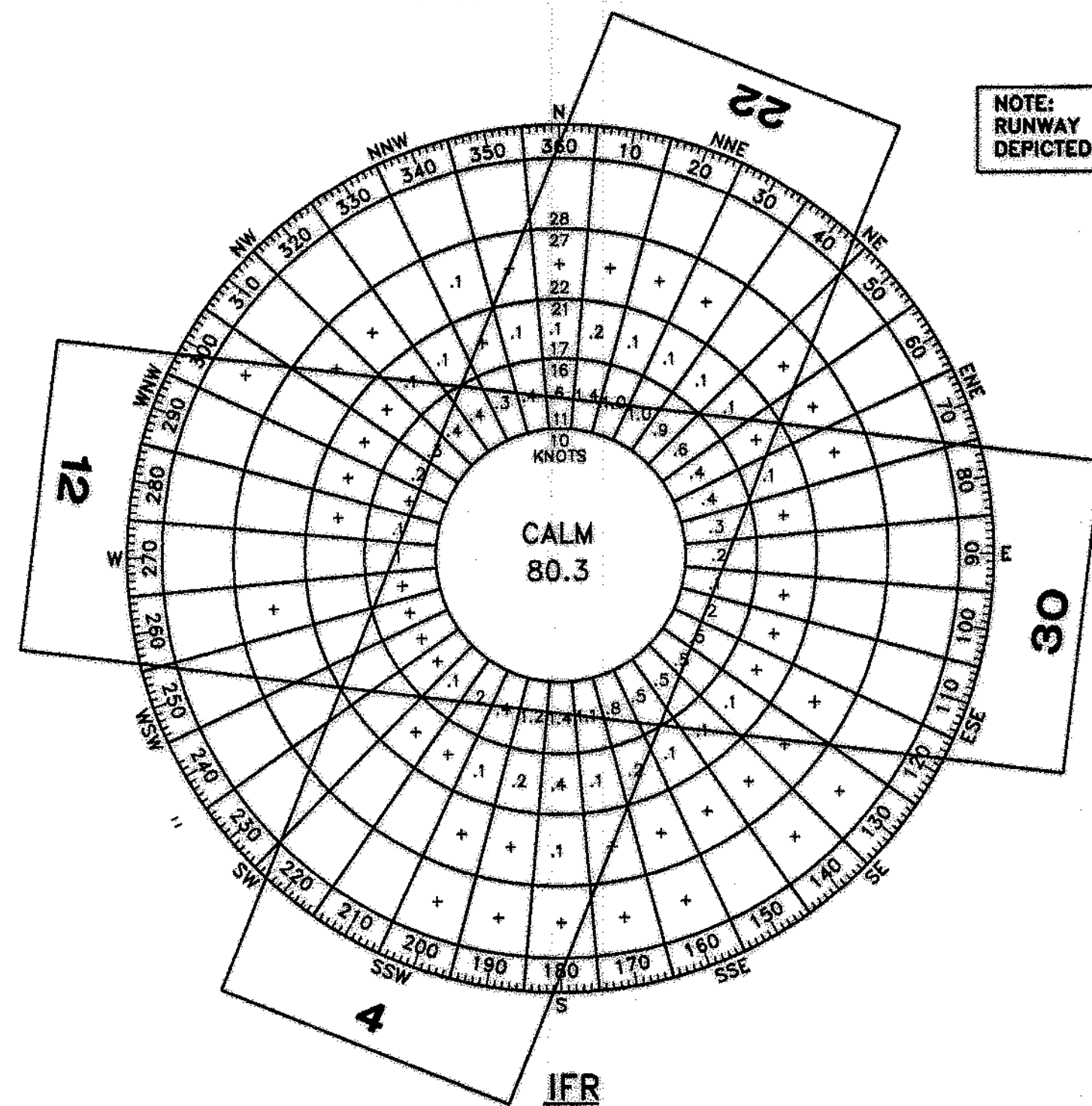
OLD TOWN MUNICIPAL AIRPORT AIRPORT MASTER PLAN

**AIRPORT LAYOUT PLAN (ULTIMATE FACILITIES)**

DRAWING NO. **3**

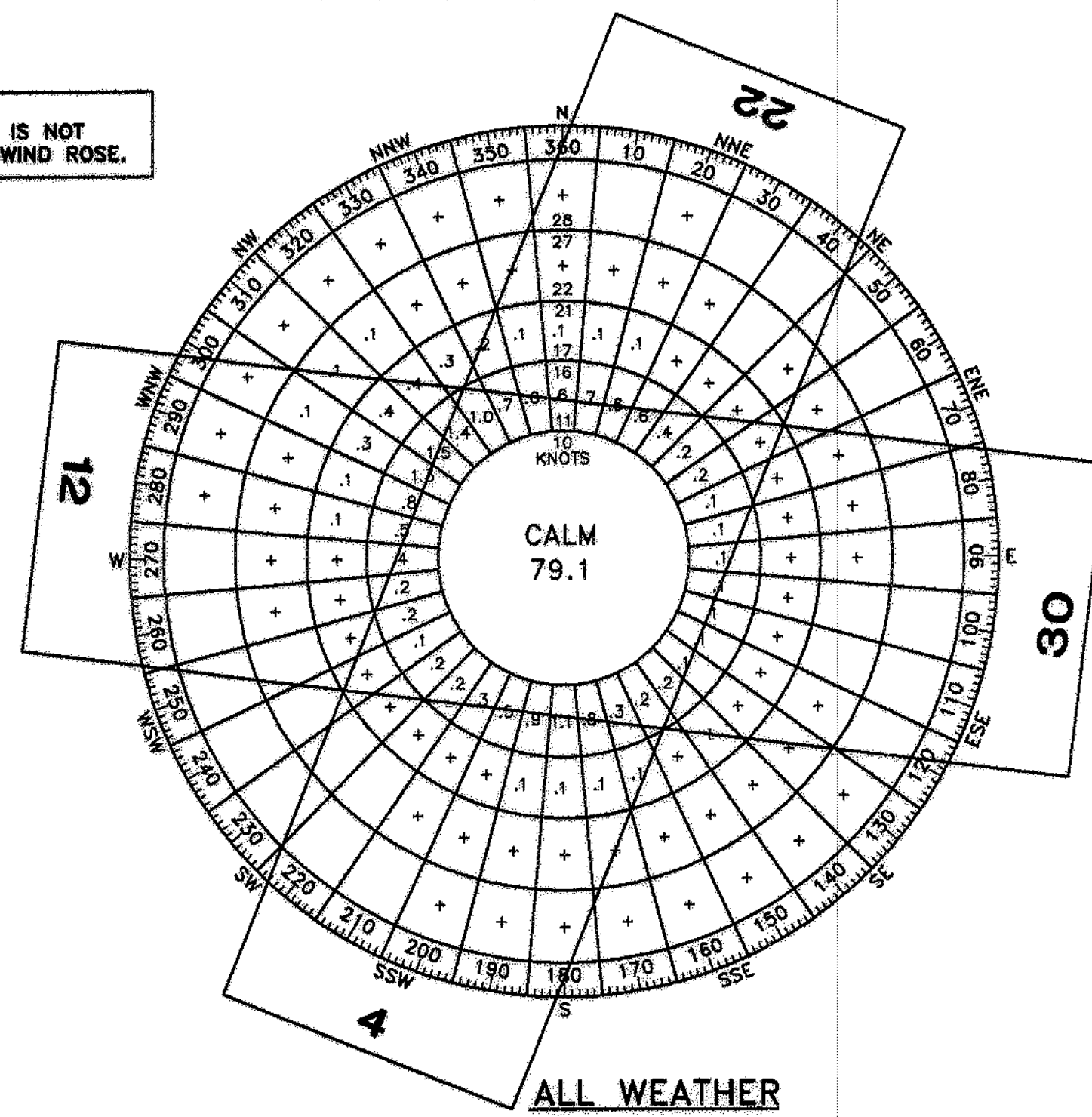
SHEET 3 OF 9

IFR WIND ROSE



NOTE: RUNWAY 17W-35W IS NOT DEPICTED ON THE WIND ROSE.

ALL WEATHER WIND ROSE



WIND DATA SUMMARY

CROSSWIND COMPONENT (KNOTS)	R/W 4-22	R/W 12-30	R/W 4-22 & 12-30
13.0	97.22%	91.77%	99.35%

STATION: BANGOR, ME #72608  
 SOURCE: NATIONAL CLIMATIC DATA CENTER/NATIONAL OCEANIC AND ATMOSPHERIC ADMINISTRATION  
 PERIOD OF OBSERVATION: 1991-2000  
 OBSERVATIONS: 10,506

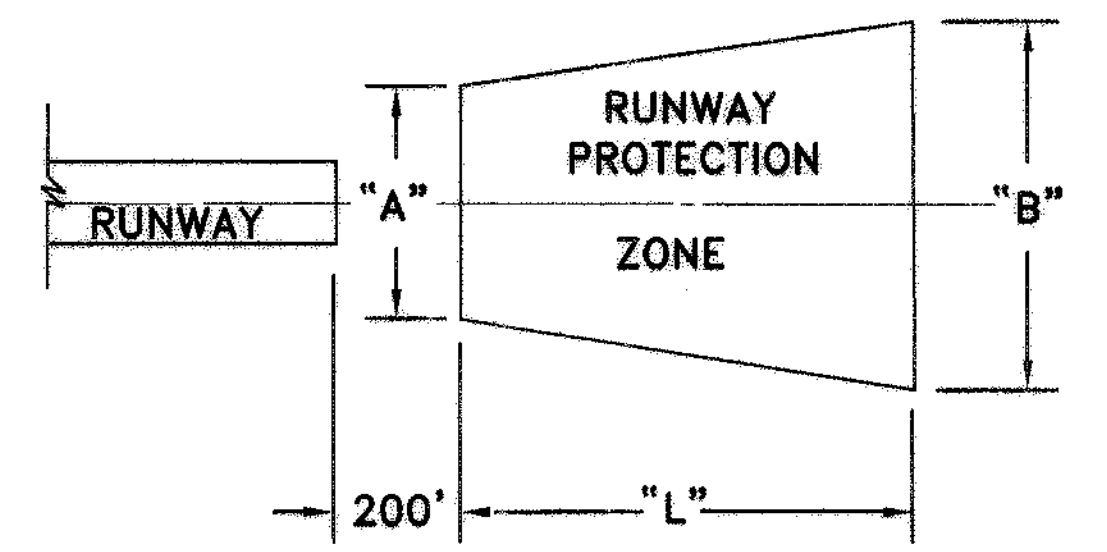
WIND DATA SUMMARY

CROSSWIND COMPONENT (KNOTS)	R/W 4-22	R/W 12-30	R/W 4-22 & 12-30
13.0	94.13%	93.48%	99.05%

STATION: BANGOR, ME #72608  
 SOURCE: NATIONAL CLIMATIC DATA CENTER/NATIONAL OCEANIC AND ATMOSPHERIC ADMINISTRATION  
 PERIOD OF OBSERVATION: 1991-2000  
 OBSERVATIONS: 92,118

AIRPORT DESIGN CRITERIA: B-II

DESIGN ELEMENT	REQUIRED B-II DESIGN CRITERIA (IN FEET)	RUNWAY 12-30		RUNWAY 4-22		RUNWAY 17W-35W	
		EXISTING	FUTURE	EXISTING	FUTURE	EXISTING	FUTURE
<b>RUNWAY PROTECTION ZONE: (RPZ)</b> VISUAL AND APPROACH VISIBILITY MINIMUMS NOT LOWER THAN 1-MILE FOR SMALL AIRCRAFT EXCLUSIVELY							
LENGTH	1,000'	1,000'	SAME	1,000'	SAME	N/A	N/A
INNER WIDTH	500'	500'	SAME	500'	SAME	N/A	N/A
OUTER WIDTH	700'	700'	SAME	700'	SAME	N/A	N/A
<b>RUNWAY:</b>							
LENGTH	*	3,999'	SAME	3,199'	SAME	8,400'	SAME
WIDTH	75'	100'	75'	75'	SAME	100'	200'
<b>RUNWAY SAFETY AREA: (RSA)</b>							
LENGTH BEYOND RUNWAY END	300'	RUNWAY 12-300' RUNWAY 30-300'	SAME	RUNWAY 4-300' RUNWAY 22-300'	SAME	N/A	N/A
WIDTH	150'	150'	SAME	150'	SAME	N/A	N/A
<b>RUNWAY OBSTACLE FREE ZONE: (OFZ)</b>							
LENGTH BEYOND RUNWAY END	200'	RUNWAY 12-300' RUNWAY 30-300'	SAME	RUNWAY 4-300' RUNWAY 22-300'	SAME	N/A	N/A
WIDTH	400'	225'	400'	225'	400'	N/A	N/A
<b>RUNWAY OBJECT FREE AREA: (OFA)</b>							
LENGTH BEYOND RUNWAY END	300'	RUNWAY 12-300' RUNWAY 30-300'	SAME	RUNWAY 4-300' RUNWAY 22-300'	SAME	N/A	N/A
WIDTH	500'	500'	SAME	500'	SAME	N/A	N/A
<b>TAXIWAY/TAXILANE:</b>							
WIDTH	35'	50'	SAME	50'	SAME	N/A	N/A
TAXIWAY SAFETY AREA (TSA) WIDTH	79'	79'	SAME	79'	SAME	N/A	N/A
TAXIWAY OBJECT FREE AREA (OFA) WIDTH	131'	131'	SAME	131'	SAME	N/A	N/A
TAXILANE OBJECT FREE AREA WIDTH	115'	115'	SAME	115'	SAME	N/A	N/A
<b>RUNWAY SEPARATION STANDARDS:</b> FOR AIRCRAFT APPROACH CATEGORIES A & B FOR VISUAL RUNWAYS AND RUNWAYS WITH NOT LOWER THAN 3/4-STATUTE MILE APPROACH VISIBILITY MINIMUMS							
RUNWAY CENTERLINE TO TAXIWAY/TAXILANE CENTERLINE	240'	N/A	240'	N/A	240'	N/A	N/A
RUNWAY CENTERLINE TO AIRCRAFT PARKING AREA	250'	250'	SAME	250'	SAME	N/A	N/A
<b>TAXIWAY/TAXILANE SEPARATION STANDARDS:</b>							
TAXIWAY CENTERLINE TO PARALLEL TAXIWAY/TAXILANE CENTERLINE	105'	N/A	SAME	N/A	SAME	N/A	N/A
TAXIWAY CENTERLINE TO A FIXED OR MOVEABLE OBJECT	65.5'	65.5'	SAME	65.5'	SAME	N/A	N/A
TAXILANE CENTERLINE TO PARALLEL TAXILANE CENTERLINE	97'	97'	SAME	97'	SAME	N/A	N/A
TAXILANE CENTERLINE TO A FIXED OR MOVEABLE OBJECT	57.5'	57.5'	SAME	57.5'	SAME	N/A	N/A



	RUNWAY	CATEGORY	APPROACH SLOPE
FUTURE	12	NON PRECISION	20:1
	30	NON PRECISION	20:1
EXISTING	12	NON PRECISION	20:1
	30	NON PRECISION	20:1
FUTURE	4	NON PRECISION	20:1
	22	NON PRECISION	20:1
EXISTING	4	VISUAL	20:1
	22	NON PRECISION	20:1

	RUNWAY	CATEGORY	"L"	"A"	"B"
FUTURE	12	NON PRECISION	1,000'	500'	700'
	30	NON PRECISION	1,000'	500'	700'
EXISTING	12	NON PRECISION	1,000'	500'	700'
	30	NON PRECISION	1,000'	500'	700'
FUTURE	4	NON PRECISION	1,000'	500'	700'
	22	NON PRECISION	1,000'	500'	700'
EXISTING	4	VISUAL	1,000'	500'	700'
	22	NON PRECISION	1,000'	500'	700'

PROJECT DESIGNER: **Hoyle, Tanner & Associates, Inc.**  
 150 DOW STREET - MANCHESTER, NH 03101-1227  
 Tel: (603) 869-5955 Fax: (603) 869-4166 WEB PAGE: www.hta-nh.com

PROJECT NO. SAIP11.9047(1)  
 OLD TOWN PROJECT NO. 008792.03

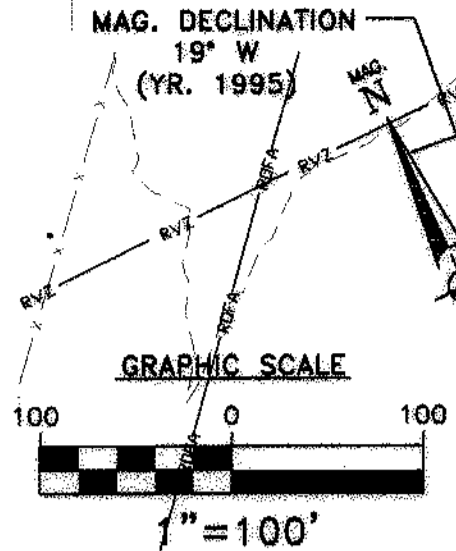
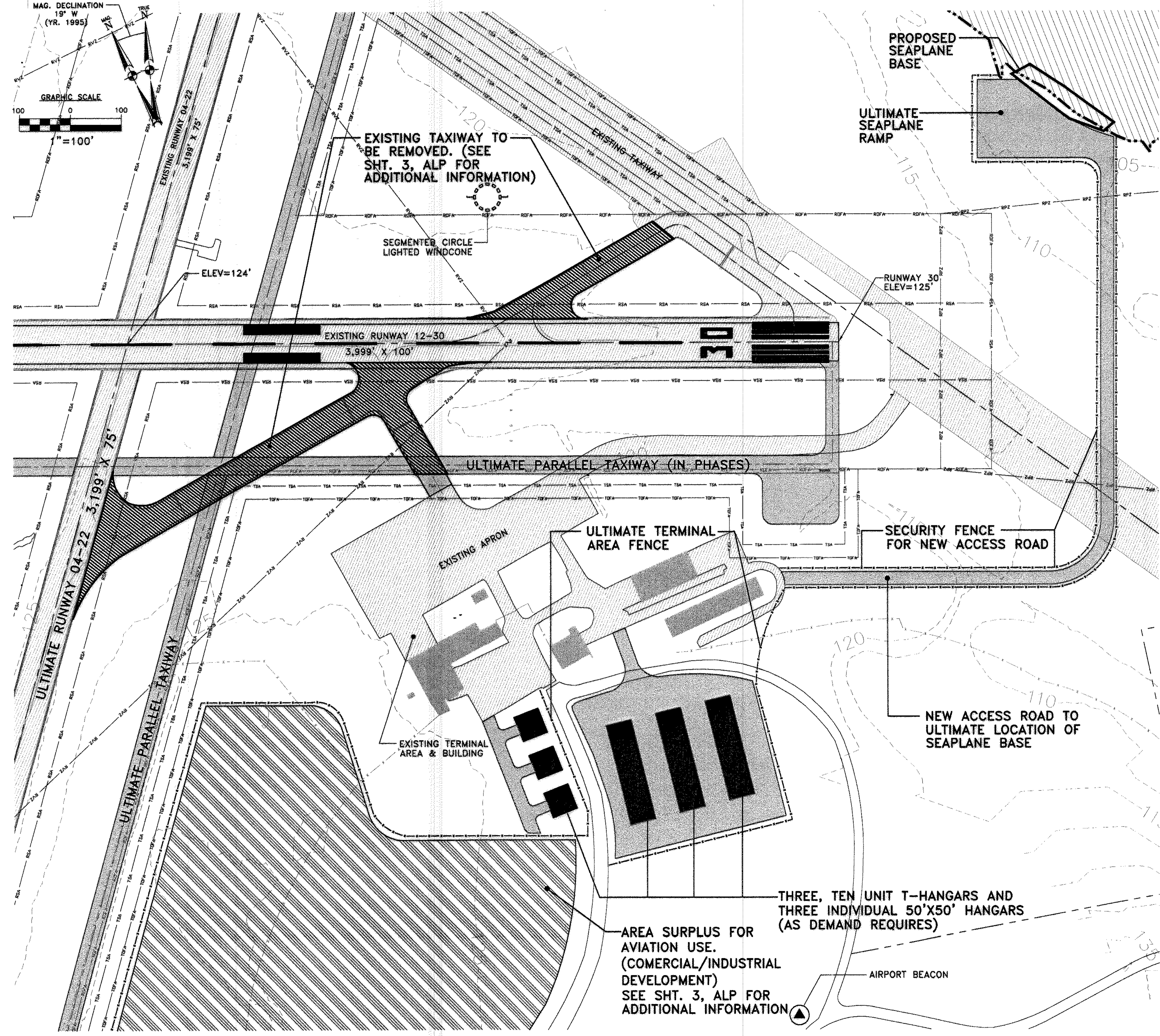
DESIGNER: TLM  
 CHECKED BY: JRL  
 DATE: DECEMBER, 2002

SCALE: AS SHOWN

HTA PROJ. No.: 302901.03  
 oldata.dwg

DRAWING NO. **4**

SHEET 4 OF 9



SYMBOL		LEGEND	
[Symbol]	PAVEMENT EDGE	[Symbol]	NEW TERMINAL AREA DEVELOPMENT
[Symbol]	RUNWAY CENTERLINE	[Symbol]	EXISTING PAVEMENT
[Symbol]	AIRPORT PROPERTY LINE	[Symbol]	EXISTING PAVEMENT TO BE REMOVED
[Symbol]	SECURITY FENCING	[Symbol]	PROPOSED PAVED THE DOWN
[Symbol]	EXISTING BUILDING		
[Symbol]	ULTIMATE STRUCTURE		

OLD TOWN MUNICIPAL AIRPORT  
 AIRPORT MASTER PLAN  
**TERMINAL AREA PLAN**

HTA PROJ. No.: 302901.03  
 omterminal.dwg

DRAWING NO. **5**

SHEET 5 OF 9

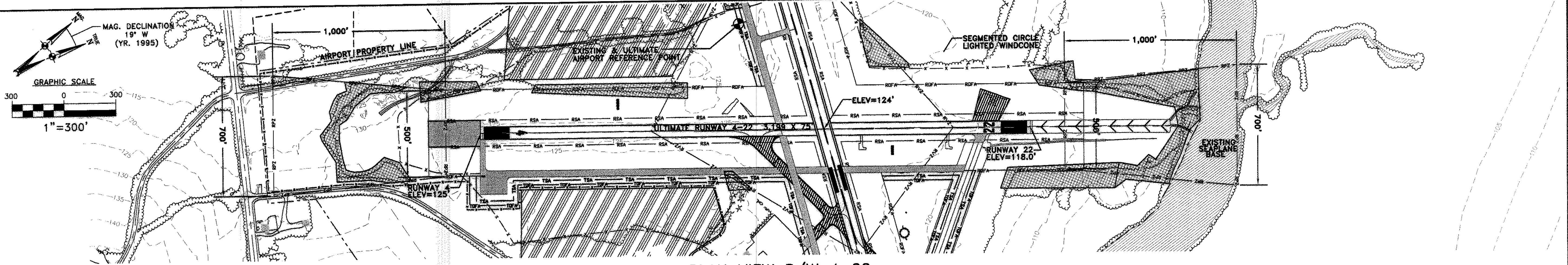
PROJECT DESIGNER  
**Hoyle, Tanner & Associates, Inc.**  
 150 DOW STREET - MANCHESTER, NH 03101 - 1227  
 Tel: (603) 689-5555 Fax: (603) 689-4168 WEB PAGE: www.hta-nh.com

STATE PROJECT NO. SAIP11.9047(1)  
 OLD TOWN PROJECT NO. 008792.03

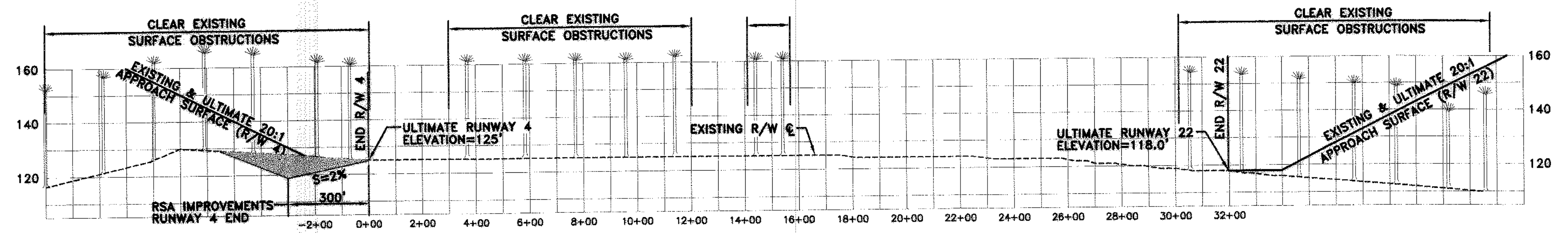
DESIGNER: TLM  
 CHECKED BY: JRL  
 DATE: DECEMBER, 2002

SCALE: AS SHOWN

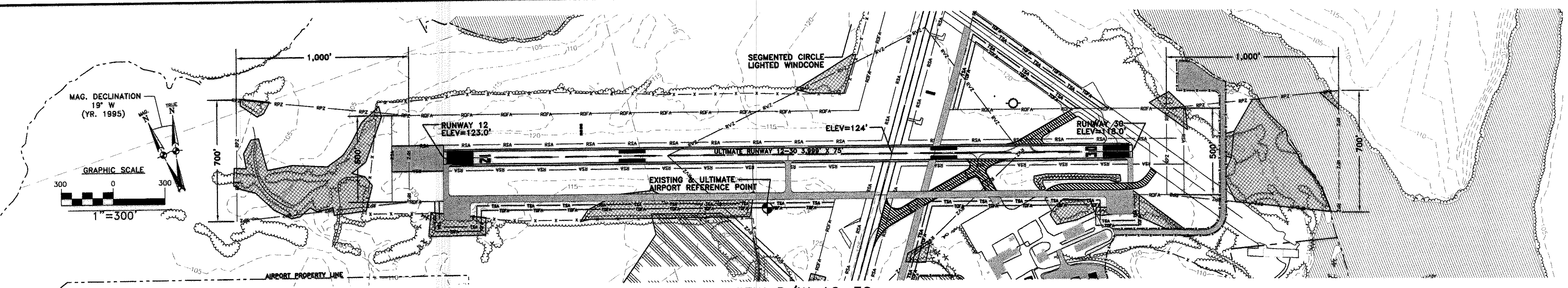
REV. NO.	DATE	BY	DESCRIPTION
1			



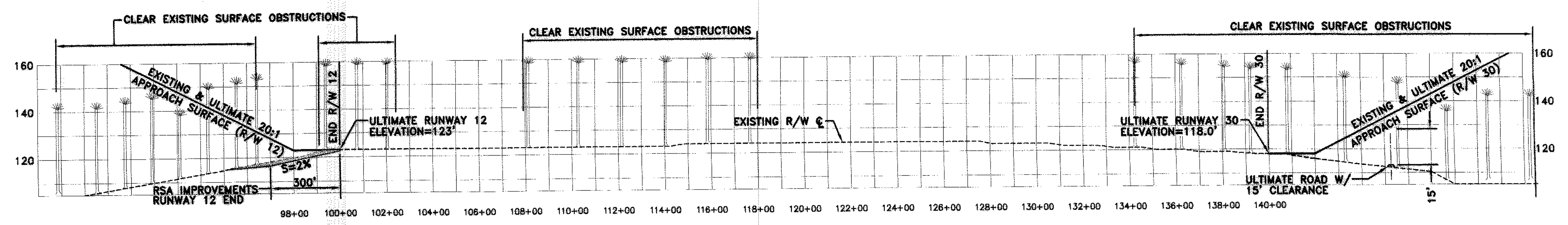
**PLAN VIEW R/W 4-22**  
SCALE: 1"=300'



**PROFILE R/W 4-22**  
SCALE: 1"=300' HORZ  
1"=30' VERT.

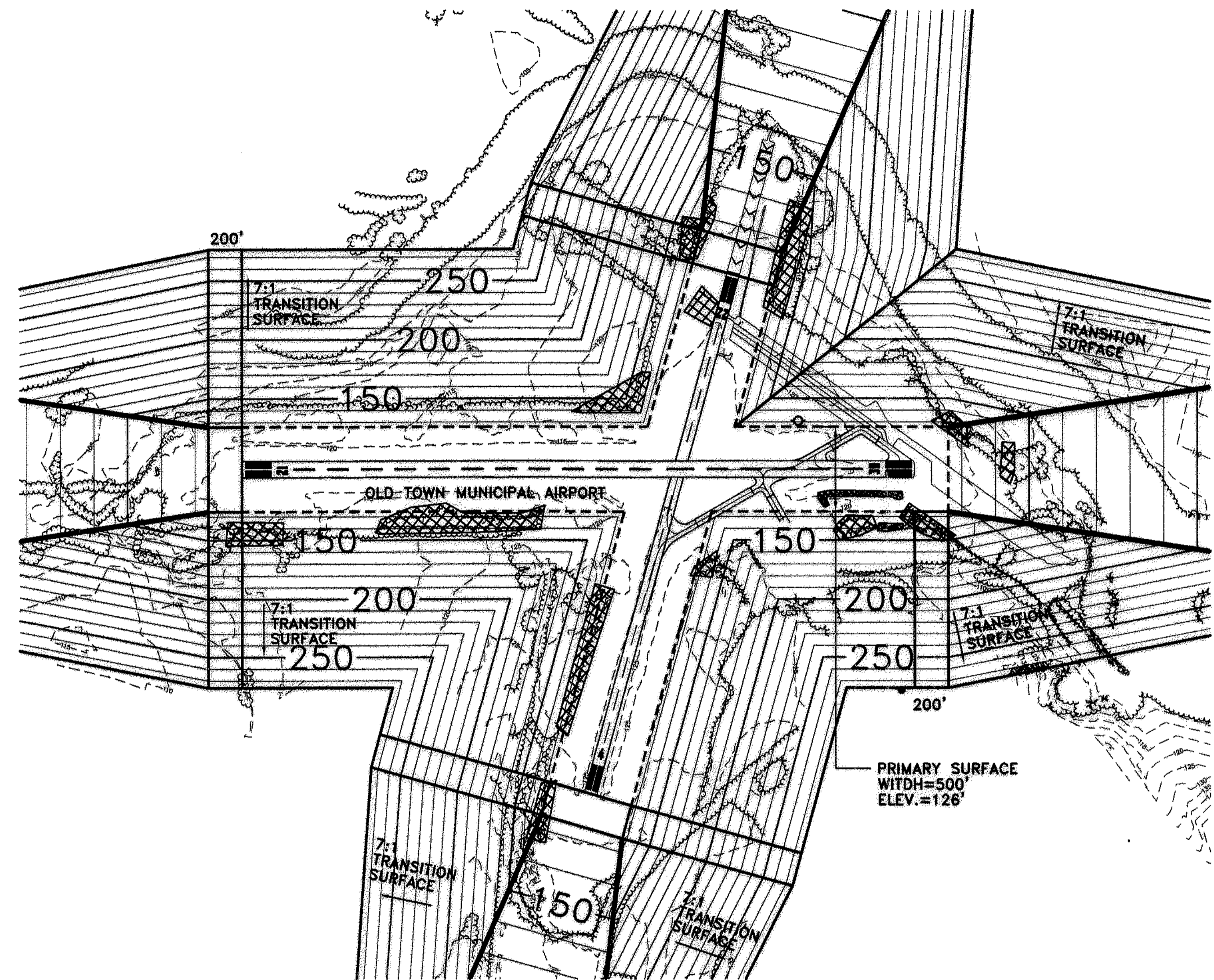
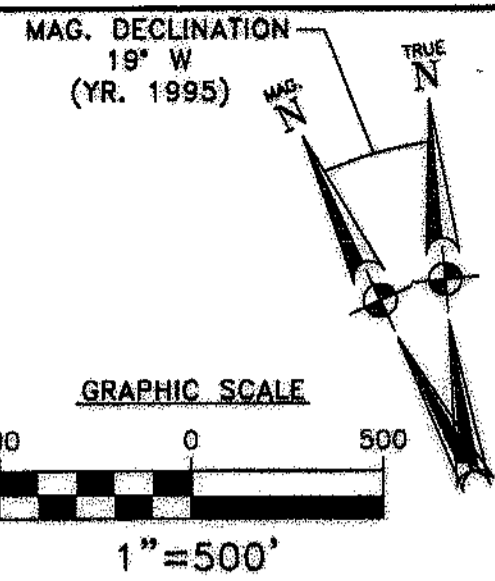
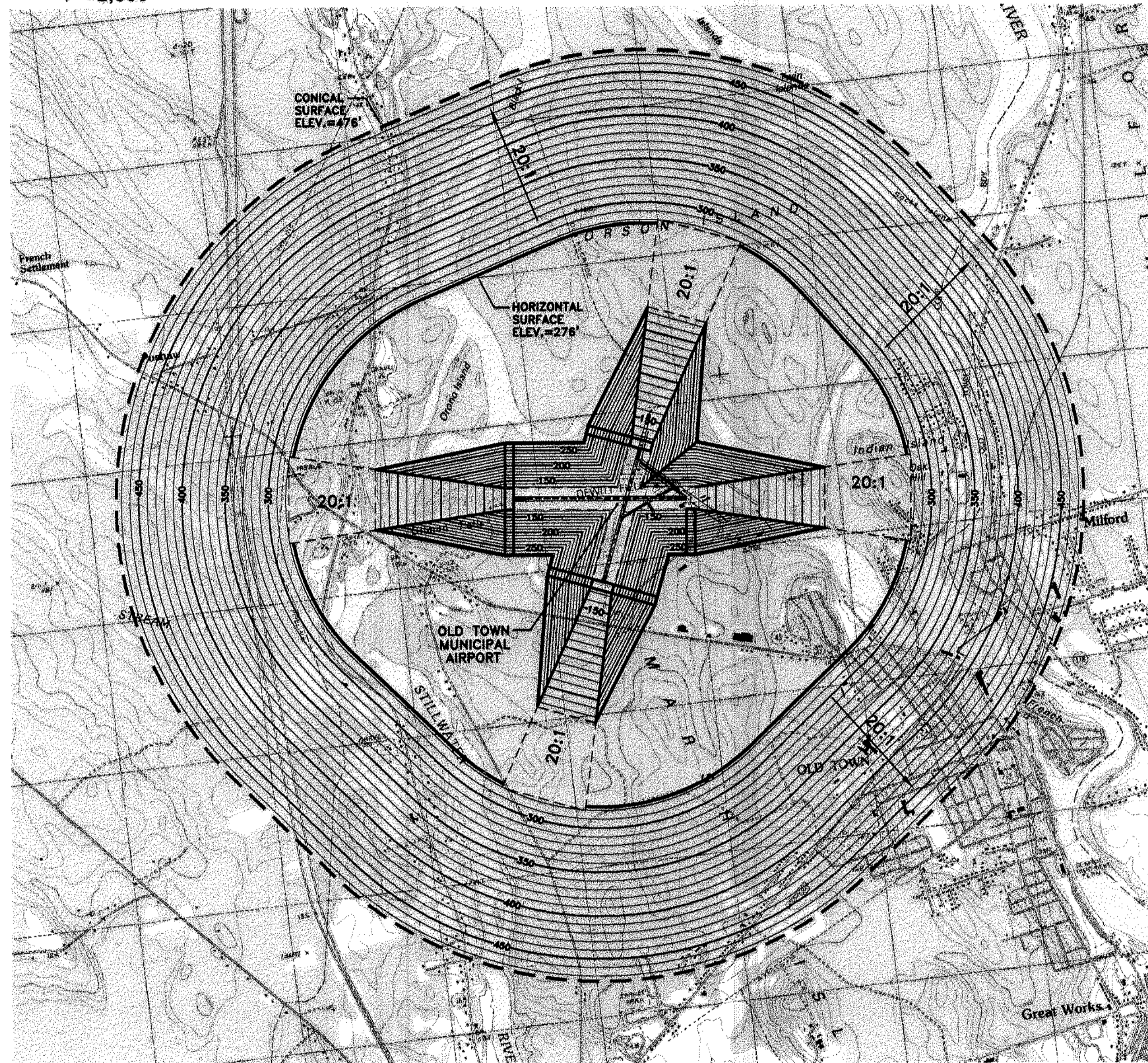
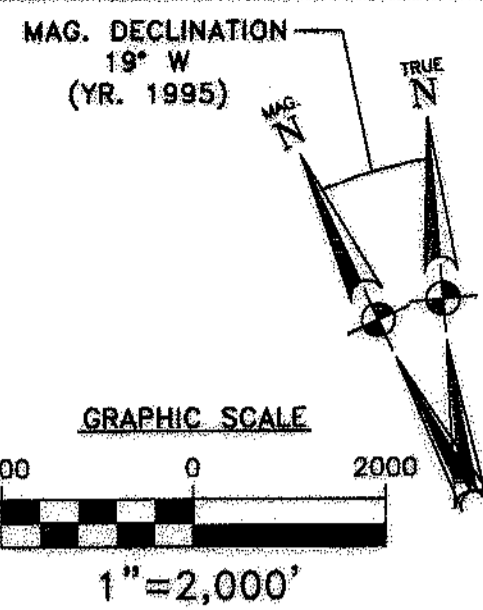


**PLAN VIEW R/W 12-30**  
SCALE: 1"=300'



**PROFILE R/W 12-30**  
SCALE: 1"=300' HORZ  
1"=30' VERT.

REVISIONS		STATE PROJECT NO.	SAIP11.9047(1)
BY	DESCRIPTION	OLD TOWN PROJECT NO.	008792.03
DATE		DES. BY	TLM
REV. NO.		DR. BY	TDB
		CHKD. BY	JRL
PROJECT DESIGNER		HTA Consulting Engineers	
Hoyle, Tanner & Associates, Inc.		150 DOW STREET - MANCHESTER, NH 03101 - 1227	
		Tel: (603) 689-5555 Fax: (603) 689-4168 WEB PAGE: www.hta-nh.com	
OLD TOWN MUNICIPAL AIRPORT AIRPORT MASTER PLAN		SCALE: AS SHOWN DATE: DECEMBER, 2002	
R/W 4-22 AND R/W 12-30		HTA PROJ. No.: 302901.03	
PLAN AND PROFILE		otmpnprof.dwg	
		DRAWING NO.	
		6	
SHEET 6 OF 9		REV	



ULTIMATE PART 77 AIRSPACE SURFACES

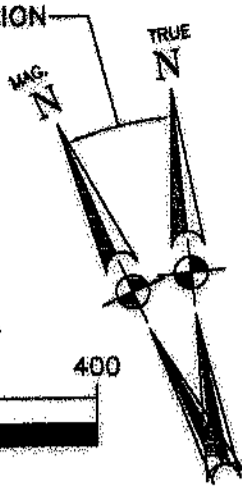
AIRPORT IMAGINARY SURFACE	RUNWAY 4	RUNWAY 22	RUNWAY 12	RUNWAY 30
CLASSIFICATION	UTILITY	UTILITY	UTILITY	UTILITY
APPROACH	NON-PRECISION	NON-PRECISION	NON-PRECISION	NON-PRECISION
VISIBILITY MINIMUMS	1 MILE	1 MILE	1 MILE	1 MILE
AIRPORT ELEVATION	126'			
HORIZONTAL SURFACE:	/ / / / /			
HORIZONTAL SURFACE ELEVATION	276'	276'	276'	276'
HORIZONTAL SURFACE RADIUS	5,000'	5,000'	5,000'	5,000'
CONICAL SURFACE:	/ / / / /			
HORIZONTAL DISTANCE	4,000'	4,000'	4,000'	4,000'
SLOPE	20:1	20:1	20:1	20:1
PRIMARY SURFACE:	/ / / / /			
LENGTH BEYOND USABLE RUNWAY END	200'	200'	200'	200'
WIDTH	500'	500'	500'	500'
APPROACH SURFACE:	/ / / / /			
INNER EDGE WIDTH	500'	500'	500'	500'
OUTER EDGE WIDTH	2,000'	2,000'	2,000'	2,000'
HORIZONTAL DISTANCE	5,000'	5,000'	5,000'	5,000'
SLOPE	20:1	20:1	20:1	20:1
TRANSITIONAL SURFACE:	7:1	7:1	7:1	7:1

LEGEND

SYMBOL	DESCRIPTION	SYMBOL	DESCRIPTION
	EXISTING ROADS		APPROACH SURFACE ABOVE HORIZONTAL SURFACE ELEVATION
	EXISTING DIRT/AWD ROAD		APPROACH SURFACE
	AIRPORT PROPERTY LINE		SURFACE OBSTRUCTIONS
	CONICAL SURFACE		PRIMARY SURFACE
	HORIZONTAL SURFACE		
	SURFACE ELEVATION CONTOUR		
	EXISTING TREE LINE		

REVISIONS BY: _____ DATE: _____ REV. NO.: _____	STATE PROJECT NO. SAIP11.9047(1)	OLD TOWN PROJECT NO. 008792.03	DES. BY: TLM DR. BY: TDB CHKD. BY: JRL	DATE: DECEMBER, 2002 SCALE: AS SHOWN	PROJECT DESIGNER <b>Hoyle, Tanner &amp; Associates, Inc.</b> 150 DOW STREET - MANCHESTER, NH 03101-1227 Tel: (603) 669-5555 Fax: (603) 669-4188 WEB PAGE: www.hta-nh.com
HTA Consulting Engineers					
OLD TOWN MUNICIPAL AIRPORT AIRPORT MASTER PLAN					
<b>FAR PART 77 AIRSPACE SURFACES</b>					
HTA PROJ. No.: 302901.03 ofnpar77.dwg					
DRAWING NO. <b>7</b>					
SHEET 7 OF 9					

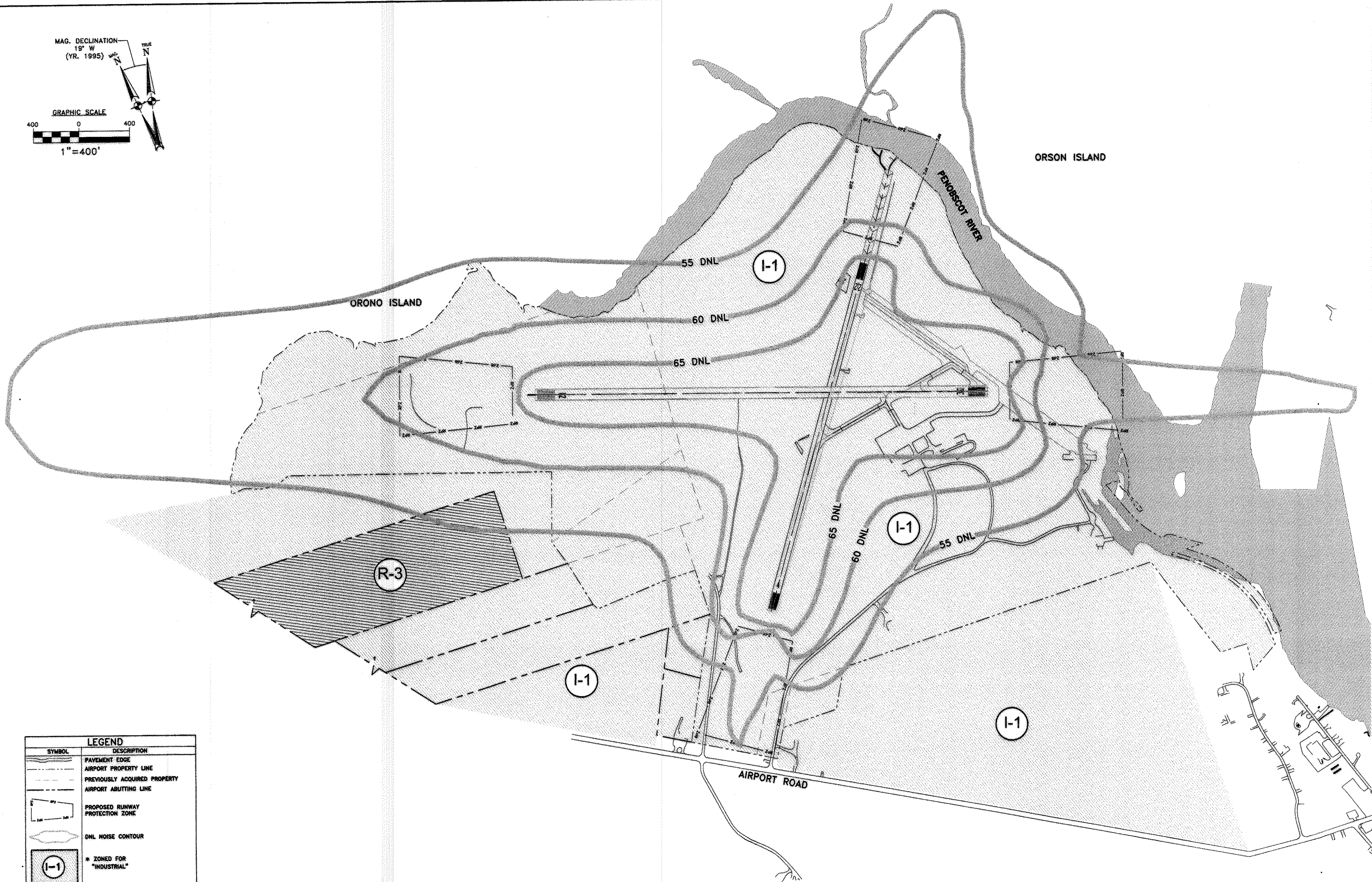
MAG. DECLINATION  
19° W  
(YR. 1995)



GRAPHIC SCALE



1" = 400'



LEGEND	
SYMBOL	DESCRIPTION
	PAVEMENT EDGE
	AIRPORT PROPERTY LINE
	PREVIOUSLY ACQUIRED PROPERTY
	AIRPORT ABUTTING LINE
	PROPOSED RUNWAY PROTECTION ZONE
	DNL NOISE CONTOUR
	* ZONED FOR "INDUSTRIAL"
	* ZONED FOR "RURAL RESIDENCE & FARMING"

\* BASED ON ZONING MAP BY THE CITY OF OLD TOWN, PENOBSCOT COUNTY, MAINE, DATED APRIL 9, 1988

STATE PROJECT NO. SAIP11.9047(1)		OLD TOWN PROJECT NO. 008792.03	
REV. NO.	DATE	BY	DESCRIPTION
PROJECT DESIGNER <b>Hoyle, Tanner &amp; Associates, Inc.</b> 150 DOW STREET - MANCHESTER, NH 03101 - 1227 Tel: (603) 689-5555 Fax: (603) 689-4188 WEB PAGE: www.hta-nh.com		DES. BY TLM	CHKD. BY JRL
PROJECT NO. <b>HTA</b> Consulting Engineers		DR. BY TDB	DATE DECEMBER, 2002
SCALE: AS SHOWN		DATE: DECEMBER, 2002	
OLD TOWN MUNICIPAL AIRPORT AIRPORT MASTER PLAN			
<b>LAND USE PLAN</b>			
HTA PROJ. No.: 302901.03			
drawing.dwg			
DRAWING NO. <b>8</b>			
SHEET 8 OF 9			

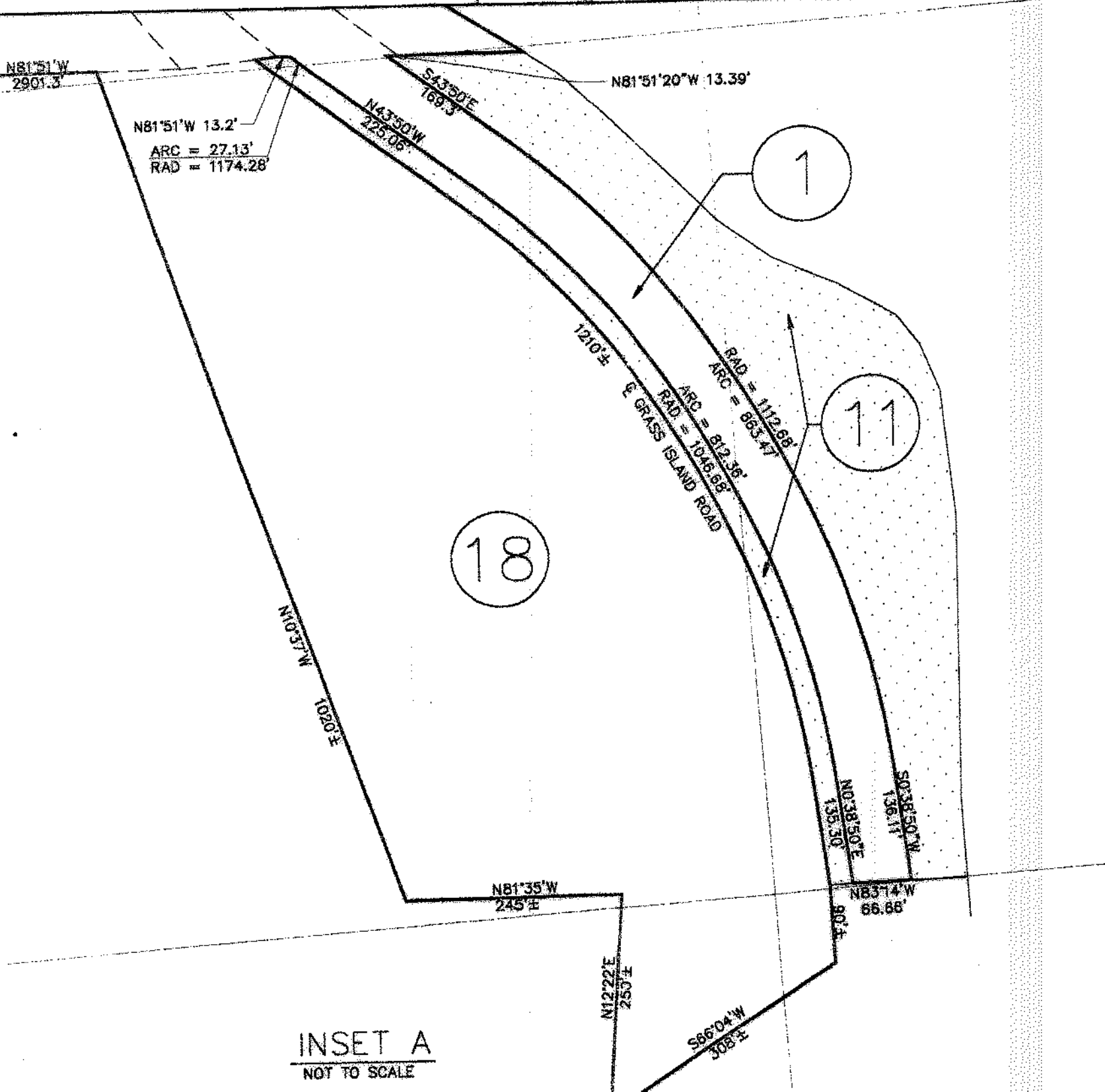


PARCEL NO.	GRANTOR	GRANTEE	INSTRUMENT	BK/PG	DATE	AREA	REMARKS
1	USA	CITY OF OLD TOWN	FEE	1171/300	8-15-81	343.50 Ac	1941 AP-4 AGREEMENT
2	PRINHAM ET ALS	CITY OF OLD TOWN	FEE	1171/300	12-17-41	0.45 Ac	CITY FUNDED
3	NEPTUNE	CITY OF OLD TOWN	FEE	1171/304	12-17-41	9.78 Ac	CITY FUNDED
4	LEWIS ET ALS	CITY OF OLD TOWN	EASEMENT	1185/4	10-13-42	11.08 Ac	CITY FUNDED
5	JOHN	CITY OF OLD TOWN	EASEMENT	R2/305	8-27-42	8.12 Ac	CITY FUNDED
6	JOHN	CITY OF OLD TOWN	EASEMENT	R2/307	8-27-42	4.87 Ac	CITY FUNDED
7	JOHN	CITY OF OLD TOWN	EASEMENT	R2/307	8-27-42	8.19 Ac	CITY FUNDED
8	JOHN	CITY OF OLD TOWN	EASEMENT	R2/307	8-27-42	0.04 Ac	CITY FUNDED
9	SEILBORG	CITY OF OLD TOWN	FEE	1219/391	8-29-40	15.38 Ac	CITY FUNDED
10	BANGOR HYDRO ELECTRIC CO.	CITY OF OLD TOWN	FEE	1234/39	12-19-49	13.98 Ac	CITY FUNDED
11	NEPTUNE	CITY OF OLD TOWN	EASEMENT	1282/320	8-4-47	12.17 Ac	CITY FUNDED
12	COLLETT FRANGIS ET ALS	CITY OF OLD TOWN	EASEMENT	1282/485	1-27-89	3.80 Ac	FAA# 8-17-004-5802
13	MITHRELL	CITY OF OLD TOWN	EASEMENT	1713/353	1-29-89	18.18 Ac	FAA# 8-17-004-5802
14a,b,c	RANCO ET ALS	CITY OF OLD TOWN	EASEMENT	183/207	8-27-42		FAA# 8-17-004-5802
			EASEMENT	1713/361	1-29-89	23.38 Ac	FAA# 8-17-004-5802
			EASEMENT	1713/368	1-29-89	46.18 Ac	FAA# 8-17-004-5802
			EASEMENT	1713/374	1-29-89		FAA# 8-17-004-5802
			EASEMENT	1713/377	1-29-89		FAA# 8-17-004-5802
			EASEMENT	182/303	8-27-42		FAA# 8-17-004-5802
			EASEMENT	1082/293	8-15-44		
16	BUZZELL	CITY OF OLD TOWN	FEE	1204/223	8-19-44	3.15 Ac	FAA# 8-17-004-5802
17	PAUL ET ALS	CITY OF OLD TOWN	FEE	1713/367	8-29-89	10.83 Ac	FAA# 8-17-004-5802
18	BANGOR HYDRO ELECTRIC CO.	CITY OF OLD TOWN	FEE	1714/340	8-3-80	1.23 Ac	FAA# 8-17-004-5802
19	OLD TOWN DEVELOPMENT CO.	CITY OF OLD TOWN	FEE	1724/174	8-16-80	11.02 Ac	MEMORANDUM OF AGREEMENT
20	SHERWOOD ET ALS	CITY OF OLD TOWN	FEE	1728/148	11-25-80	2.83 Ac	FAA# 8-17-004-5803
21	DEWITT	CITY OF OLD TOWN	FEE	1729/221	12-5-80	3.82 Ac	UTILITY POLES
22	DEWITT	CITY OF OLD TOWN	EASEMENT	1868/58	10-12-82	1.82 Ac	
23	PREBLE	CITY OF OLD TOWN	FEE	2363/42	8-28-77		FAA# 8-23-0034-02
24	ROY	CITY OF OLD TOWN	FEE	2343/211-228	2-5-79		FAA# 8-23-0034-02
25	ROY	CITY OF OLD TOWN	FEE	2356/114	2-5-79		FAA# 8-23-0034-02
26	ROY	CITY OF OLD TOWN	FEE	2357/211-228	2-5-79		FAA# 8-23-0034-02

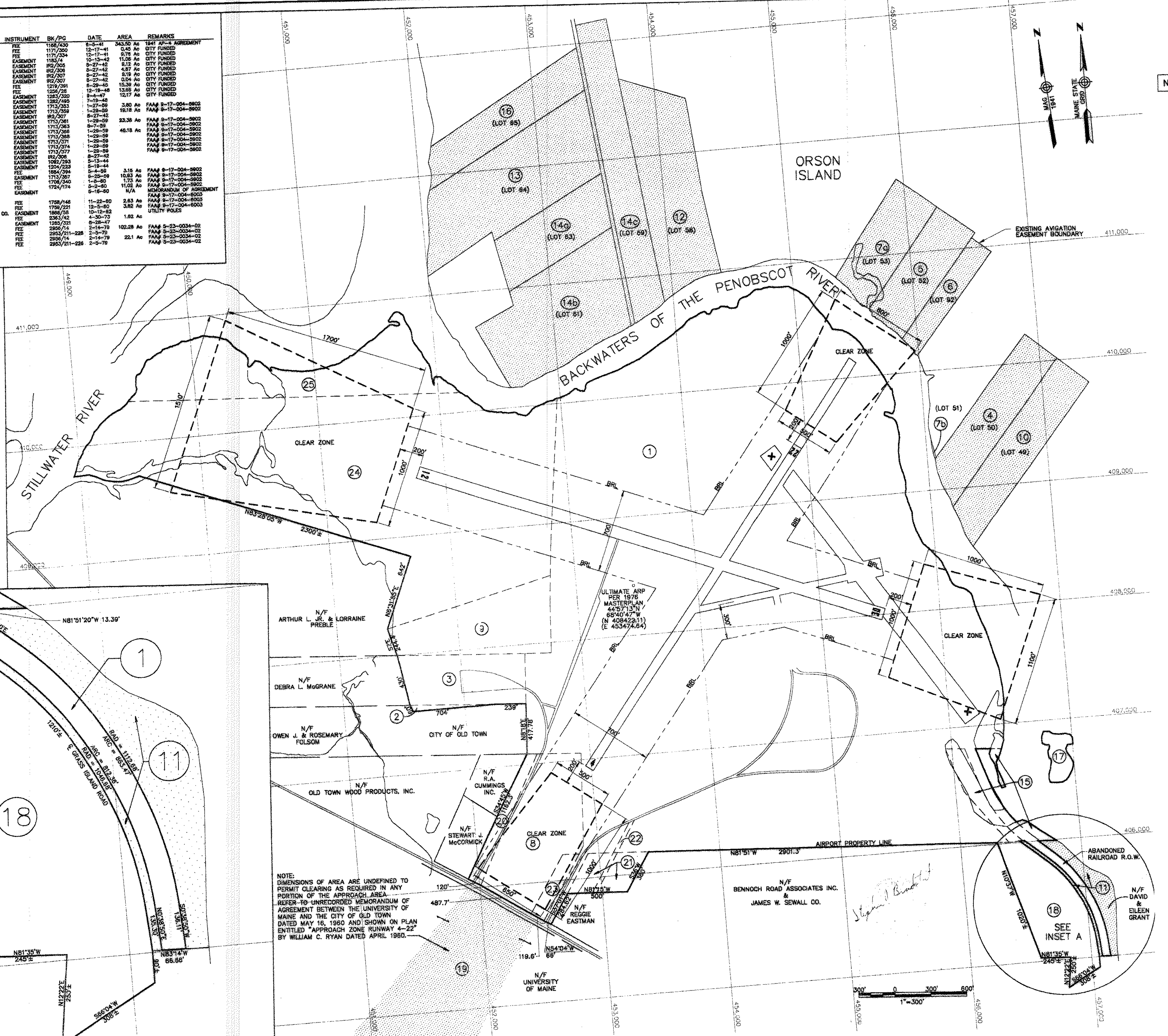
- NOTES:
- DISTANCES, ANGLES AND BEARINGS SHOWN ARE A COMPILATION OF INFORMATION FROM DEEDS AND PLANS FROM CITY OF OLD TOWN AND OTHER SOURCES, AND ARE NOT THE RESULT OF A PERIMETER SURVEY OF AIRPORT PROPERTY.
  - THE AIRPORT PROPERTY IS BOUNDED ON THE NORTH, EAST AND NORTHWEST BY THE STILLWATER AND PENOBSCOT RIVERS.
  - DEEDS LOCATED IN THE PENOBSCOT REGISTRY OF DEEDS.
  - AREAS ARE CALCULATED FROM PLAN, AND MAY NOT MATCH DEEDED AREAS.

LEGEND

- EXISTING PAVEMENT AREAS
- EXISTING AIRPORT PROPERTY LINES
- INTERIOR PARCEL LINES
- EXISTING ABUTTING PROPERTY LINES
- CLEAR ZONE LIMITS
- BUILDING RESTRICTION LINE
- AVIGATION EASEMENT AREAS

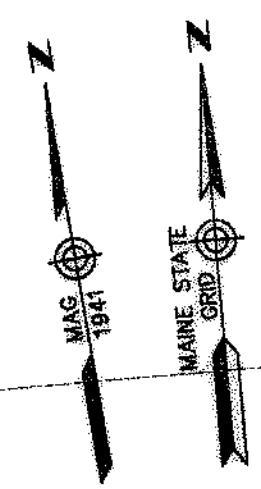


INSET A  
NOT TO SCALE



NOTE: DIMENSIONS OF AREA ARE UNDEFINED TO PERMIT CLEARING AS REQUIRED IN ANY PORTION OF THE APPROACH AREA. REFER TO UNRECORDED MEMORANDUM OF AGREEMENT BETWEEN THE UNIVERSITY OF MAINE AND THE CITY OF OLD TOWN DATED MAY 18, 1980 AND SHOWN ON PLAN ENTITLED "APPROACH ZONE RUNWAY 4-22" BY WILLIAM C. RYAN DATED APRIL 1980.

NOTE: THIS EXHIBIT "A" DRAWING WAS DONE PREVIOUSLY BY "HUNTER-BALLEW ASSOCIATES" - 6 FUNDY ROAD FALMOUTH, MAINE 04106. DATED 1991.



NOT TO SCALE

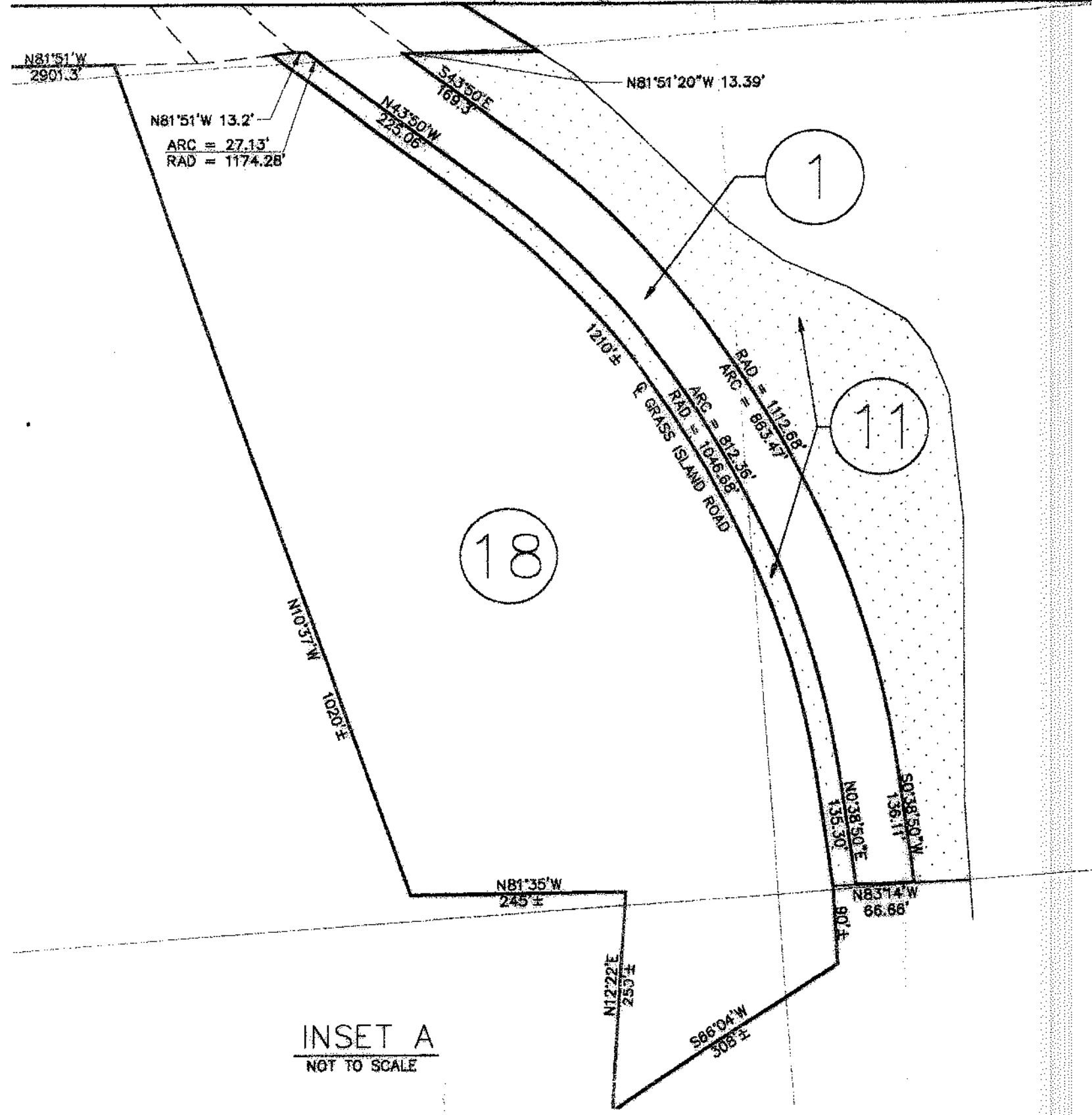
STATE PROJECT NO.	SAIP11.9047(1)
PROJECT NO.	OLD TOWN PROJECT NO. 008792.03
PROJECT DESIGNER	<b>Hoyle, Tanner &amp; Associates, Inc.</b> 150 DOW STREET - MANCHESTER, NH 03101 - 1227 Tel: (603) 689-5555 Fax: (603) 689-4188 WEB PAGE: www.hta-nh.com
PROJECT NO.	SAIP11.9047(1)
DATE	
REVISIONS	BY DESCRIPTION
DATE	
REV. NO.	
DR. BY	TDB
CHKD. BY	JRL
DES. BY	TLM
SCALE:	AS SHOWN DATE: DECEMBER, 2002
OLD TOWN MUNICIPAL AIRPORT AIRPORT MASTER PLAN	EXHIBIT 'A'
HTA PROJ. No.: 302901.03	otmhbltA.dwg
DRAWING NO.	9
SHEET	9 OF 9

PARCEL NO.	GRANTOR	GRANTEE	INSTRUMENT	BK/PG	DATE	AREA	REMARKS
1	JUN PERHAM ET ALS	CITY OF OLD TOWN	FEE	118/430	8-24-41	343.50 Ac	847 1/2" AGREEMENT
2	PERHAM ET ALS	CITY OF OLD TOWN	FEE	117/234	12-17-41	8.76 Ac	CITY FUNDED
3	NEPTUNE	CITY OF OLD TOWN	EASEMENT	118/24	10-13-42	11.28 Ac	CITY FUNDED
4	LEWIS ET ALS	CITY OF OLD TOWN	EASEMENT	182/205	9-27-42	8.12 Ac	CITY FUNDED
5	LOJAN	CITY OF OLD TOWN	EASEMENT	182/206	9-27-42	4.87 Ac	CITY FUNDED
6	LOJAN	CITY OF OLD TOWN	EASEMENT	182/207	9-27-42	9.19 Ac	CITY FUNDED
7a	JOHN SOLARIKO	CITY OF OLD TOWN	FEE	1216/291	8-28-45	15.39 Ac	CITY FUNDED
7b	JOHN SOLARIKO	CITY OF OLD TOWN	FEE	1226/291	12-19-46	13.86 Ac	CITY FUNDED
8	BANOR HYDRO ELECTRIC CO.	CITY OF OLD TOWN	EASEMENT	1226/292	8-4-47	12.17 Ac	CITY FUNDED
9	NEPTUNE	CITY OF OLD TOWN	EASEMENT	1262/495	7-19-48	3.80 Ac	FAM# 8-17-004-8902
10	NEPTUNE	CITY OF OLD TOWN	EASEMENT	1713/253	1-27-59	19.18 Ac	FAM# 8-17-004-8902
11	COLLETT	CITY OF OLD TOWN	EASEMENT	182/207	9-27-42		
12	FRANCIS ET ALS	CITY OF OLD TOWN	EASEMENT	1713/258	1-29-59	23.38 Ac	FAM# 8-17-004-8902
13	MITCHELL	CITY OF OLD TOWN	EASEMENT	1713/263	8-7-59	46.18 Ac	FAM# 8-17-004-8902
14a,c	RANGO ET ALS	CITY OF OLD TOWN	EASEMENT	1713/268	1-29-59		
			EASEMENT	1713/269	1-29-59		
			EASEMENT	1713/271	1-28-59		
			EASEMENT	1713/274	1-28-59		
			EASEMENT	1713/277	1-29-59		
			EASEMENT	182/208	8-27-42		
			EASEMENT	1082/283	8-12-44		
15	BUZZELL	CITY OF OLD TOWN	FEE	1224/223	3-19-44	3.15 Ac	FAM# 8-17-004-8902
16	PAUL ET ALS	CITY OF OLD TOWN	FEE	1713/257	8-25-59	10.93 Ac	FAM# 8-17-004-8902
17	BANOR HYDRO ELECTRIC CO.	CITY OF OLD TOWN	FEE	1782/240	1-8-60	1.73 Ac	FAM# 8-17-004-8902
18	OLD TOWN DEVELOPMENT CO.	CITY OF OLD TOWN	FEE	1724/174	5-2-80	11.02 Ac	FAM# 8-17-004-8902
19	UNIVERSITY OF MAINE	CITY OF OLD TOWN	EASEMENT		5-18-80	N/A	MEMORANDUM OF AGREEMENT FAM# 8-17-004-8903
20	SHERWOOD ET ALS	CITY OF OLD TOWN	FEE	1758/148	11-25-80	2.83 Ac	FAM# 8-17-004-8903
21	DEWY	CITY OF OLD TOWN	FEE	1759/221	12-3-80	3.82 Ac	FAM# 8-17-004-8903
22	CITY OF OLD TOWN	BANOR HYDRO ELECTRIC CO.	EASEMENT	1869/58	10-12-82		UTILITY POLES
23	DEWY	CITY OF OLD TOWN	FEE	2343/62	1-30-73	1.82 Ac	
			EASEMENT	1226/291	8-28-45		
24	PREBLE	CITY OF OLD TOWN	FEE	2926/14	2-14-79	102.28 Ac	FAM# 8-23-034-02
			FEE	2926/21-228	2-14-79		FAM# 8-23-034-02
25	ROY	CITY OF OLD TOWN	FEE	2926/14	2-14-79	22.1 Ac	FAM# 8-23-034-02
			FEE	2926/21-228	2-14-79		FAM# 8-23-034-02

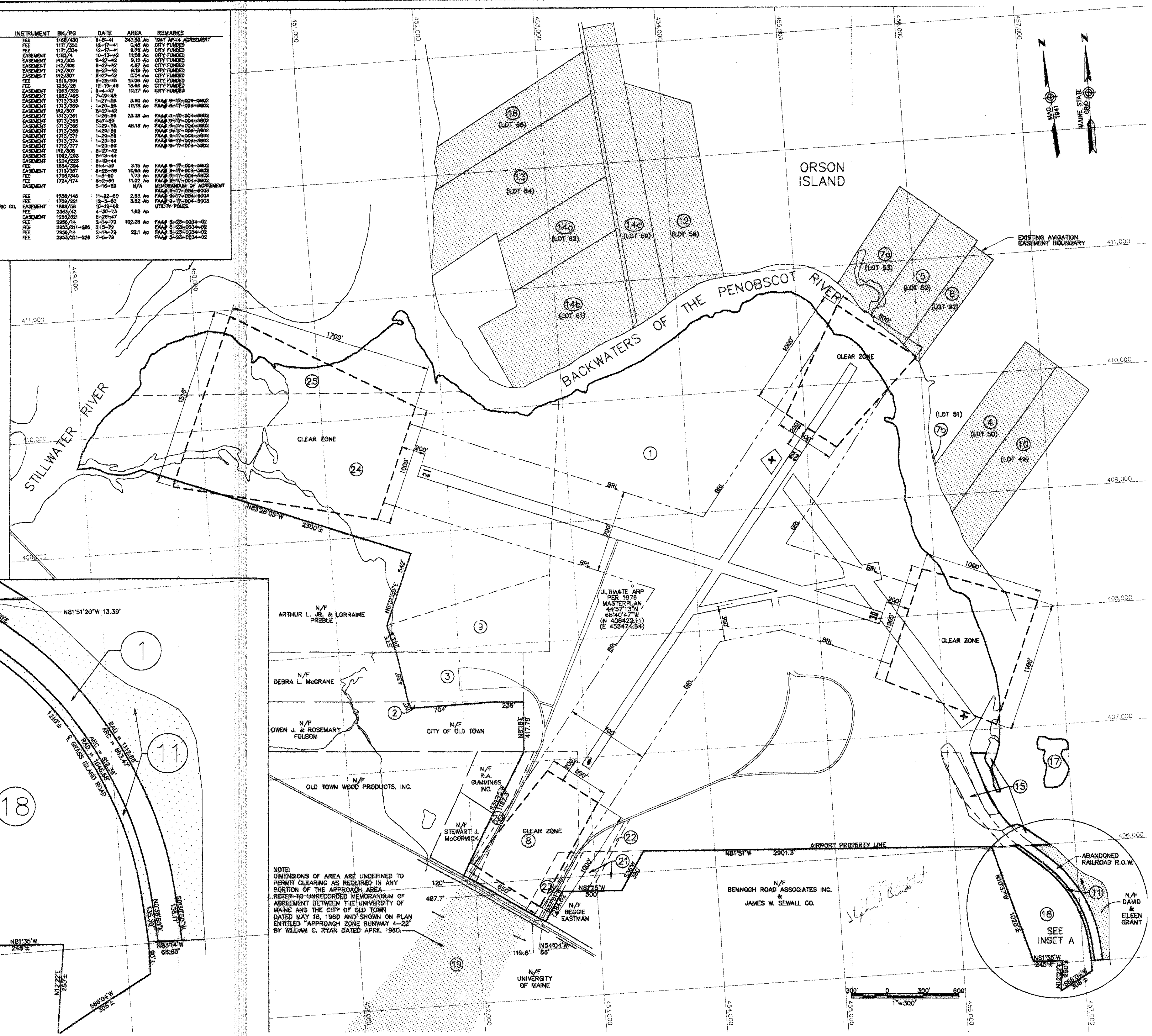
- NOTES:
- DISTANCES, ANGLES AND BEARINGS SHOWN ARE A COMPILATION OF INFORMATION FROM DEEDS AND PLANS FROM CITY OF OLD TOWN AND OTHER SOURCES, AND ARE NOT THE RESULT OF A PERIMETER SURVEY OF AIRPORT PROPERTY.
  - THE AIRPORT PROPERTY IS BOUNDED ON THE NORTH, EAST AND NORTHWEST BY THE STILLWATER AND PENOBSCOT RIVERS.
  - DEEDS LOCATED IN THE PENOBSCOT REGISTRY OF DEEDS.
  - AREAS ARE CALCULATED FROM PLAN, AND MAY NOT MATCH DEEDED AREAS.

LEGEND

- EXISTING PAVEMENT AREAS
- EXISTING AIRPORT PROPERTY LINES
- INTERIOR PARCEL LINES
- EXISTING ADJUTING PROPERTY LINES
- CLEAR ZONE LIMITS
- BRL BUILDING RESTRICTION LINE
- AVIGATION EASEMENT AREAS



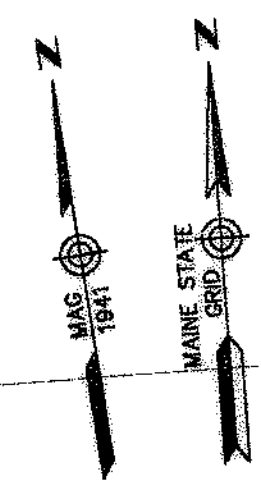
INSET A  
NOT TO SCALE



NOTE: DIMENSIONS OF AREA ARE UNDEFINED TO PERMIT CLEARING AS REQUIRED IN ANY PORTION OF THE APPROACH AREA. REFER TO UNRECORDED MEMORANDUM OF AGREEMENT BETWEEN THE UNIVERSITY OF MAINE AND THE CITY OF OLD TOWN DATED MAY 16, 1980 AND SHOWN ON PLAN ENTITLED "APPROACH ZONE RUNWAY 4-22" BY WILLIAM C. RYAN DATED APRIL 1980.



NOTE: THIS EXHIBIT "A" DRAWING WAS DONE PREVIOUSLY BY "HUNTER-BALLEW ASSOCIATES" - 6 FUNDY ROAD FALMOUTH, MAINE 04106, DATED 1991.



NOT TO SCALE

STATE PROJECT NO.	SAIP11.9047(1)
OLD TOWN PROJECT NO.	008792.03
PROJECT DESIGNER	<b>HTA</b> Hoyle, Tanner & Associates, Inc. 150 DOW STREET - MANCHESTER, NH 03101 - 1227 Tel: (603) 889-5555 Fax: (603) 889-4168 WEB PAGE: www.hta-nh.com
DES. BY	TLM
DR. BY	TDB
CHKD. BY	JRL
SCALE:	AS SHOWN DATE: DECEMBER, 2002
REV. NO.	9
DATE	
DESCRIPTION	

HTA PROJ. No.: 302901.03  
otexhhta.dwg

DRAWING NO. **9**

SHEET 9 OF 9